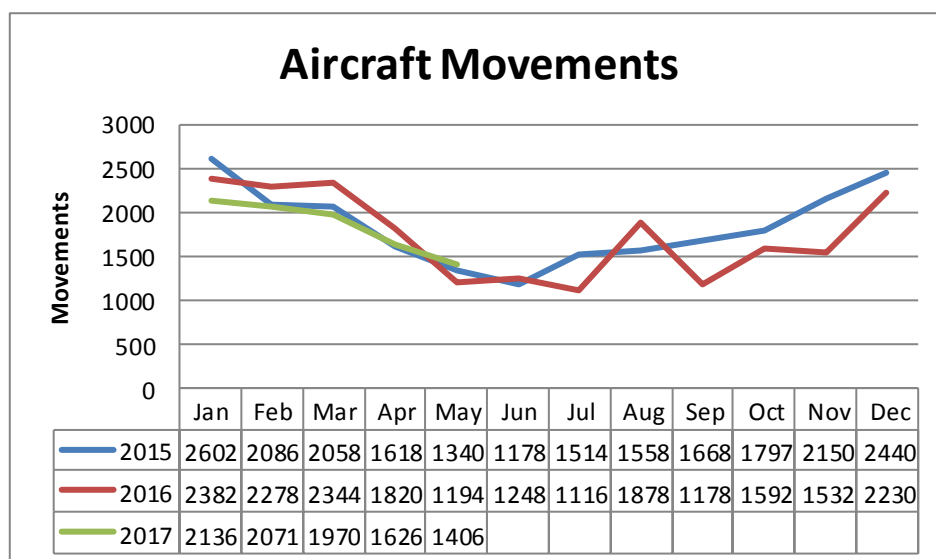


TO: TAUPŌ AIRPORT AUTHORITY COMMITTEE  
 FROM: Taupō Airport Manager  
 SUBJECT: General Manager's Report – June 2017

### Operational

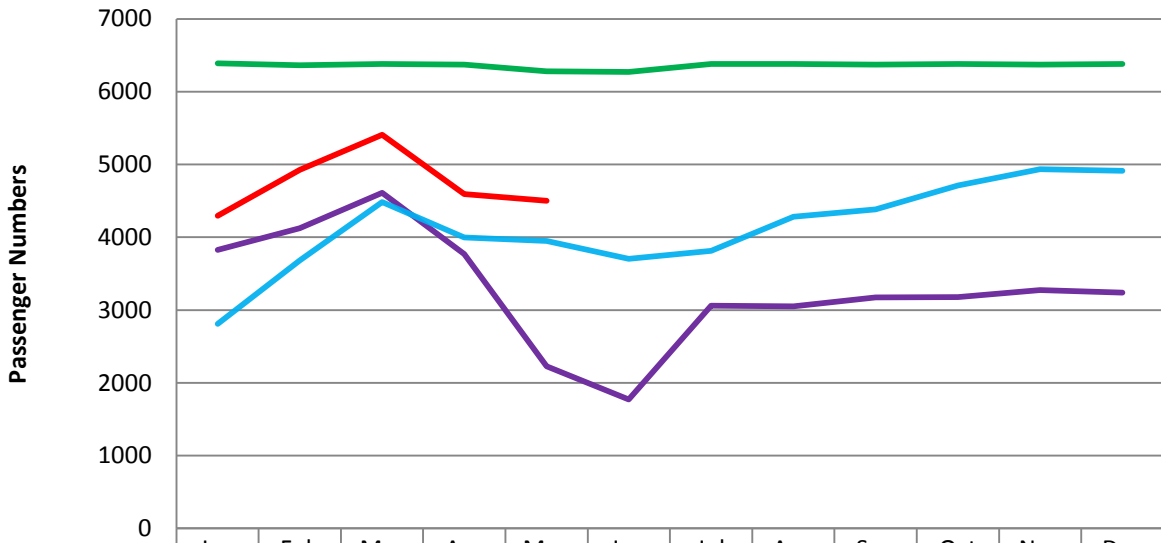
Landing activity	Monthly operated May 2017	Monthly operated May 2016	Cumulative Year 2017	Cumulative Year 2016
Scheduled flights	256	240	1234	1222
Non-scheduled charters	2	0	16	38
General Aviation				
- Helicopter	414	318	2238	2122
- Parachute	420	518	3472	4424
- Private	728	432	4466	4328
- Military	0	2	22	6
Total movements	1406	1192	9246	10018
Note: Helicopter movements are included in General Aviation movements.				



Aircraft movements are tracking similar to last year.

Passenger Activity	Month May 2017	Monthly Load Factor	Month May 2016	Cumulative Year 2017	Cumulative Load Factor 2017	Cumulative Year 2016
Scheduled flights	256		240	1234		1222
Air New Zealand	3728	63%	3433	20411	68.5%	15610
Sounds Air	773	66%	663	2238	62%	2122
Total passengers	4501		4096	22649		17732

## Total Passengers



	Jan	Feb	Mar	Apr	May	Jun	Jul	Aug	Sep	Oct	Nov	Dec
2015	3826	4124	4612	3769	2228	1773	3060	3050	3172	3180	3275	3240
2016	2810	3683	4484	3999	3950	3703	3813	4280	4382	4712	4936	4913
2017	4294	4928	5410	4594	4501							
Capacity	6388	6361	6379	6370	6279	6270	6379	6379	6370	6379	6370	6379

Passenger numbers are still well ahead of last year with an overall increase of 30.75% on the same period. The month of May saw a slight decrease to 63% in Air New Zealand loadings however this is due to a season decrease as seen by the graph above.

## **Operations Report**

### **Southern Apron**

Work commenced in late April is now completed as scheduled on the southern apron extension. A total of 2500sqm concrete surface has been added to the existing seal which has eased traffic congestion as there is a larger area for aircraft to manoeuvre safely. Painting of taxiway lines and helipads on the new surface may also be done.

### **Terminal Fence**

The terminal airside fence has been raised by 100mm to meet CAA Part 139 Rule which will improve security and safety. This was an easy fix by lifting the top rail to the required height and was completed in one day.

### **RPAS [Drone] App**

We are currently in the process of creating a drone app which will map a 4km radius around aerodromes in the Taupō area. This information will provide the drone operator contact details when an operator is seeking approval to fly their drone in the Taupō area. Taupō is unique as it has multiple aerodromes, including the lake surface, all within close proximity [see aerial map images below for details]. Due to an increase in drone use, it is paramount that we work closely with drone users to ensure safe airspace for all aviation operators.

### **Turangi Airfield**

TAA carry out monthly aerodrome inspections on the Turangi Airfield. On a previous inspection it was noted that trees on the northern approach were an obstruction. DOC was contacted and the trees subsequently removed.

### **Ground Maintenance**

Vegetation control is now evident on Anzac Memorial Drive and the process of tidying up both thresholds is underway.

### **Security**

The security gate next to Helicopter Services is a manual gate and is often left open. A suggestion from the Operations & Safety Committee was to automate the gate for improved security. Discussions are underway with the electrician to come up with the best option.

### **Airways**

Airways technicians have been rewiring all runway edge lights as part of ongoing airfield maintenance.

### **Baggage Claim**

The contract to build a new baggage claim shed has been awarded to KiwiSpan Ltd. Building will start as soon as all required council permits have been granted. We will relocate the baggage claim area to keep continuity while construction is in progress.

### **Taupō Airport Master Plan**

Internal work is being carried out on this project with assistance from council staff. Well-regarded aviation consultants firm AirBiz have been engaged and will complete a benchmarking and comparisons review of Taupō Airport passenger numbers [including forecasted passenger numbers], flight times and, flight frequencies. Part of this process will also look at leakage of passengers from Taupō to other airports.

### **Lease Sites**

An enquiry from fixed wing and helicopter operators regarding potential lease sites on the airport grounds has been received. Details have been forwarded to the relevant TDC officer responsible for managing the land along the new road in the helicopter zone.

To alleviate the immediate demand for lease sites, consideration needs to be given to revisiting the area on the southern side of ANZAC Memorial Drive as this has already been surveyed and could accommodate five new lease sites. There are prospective tenants available to lease all sites.

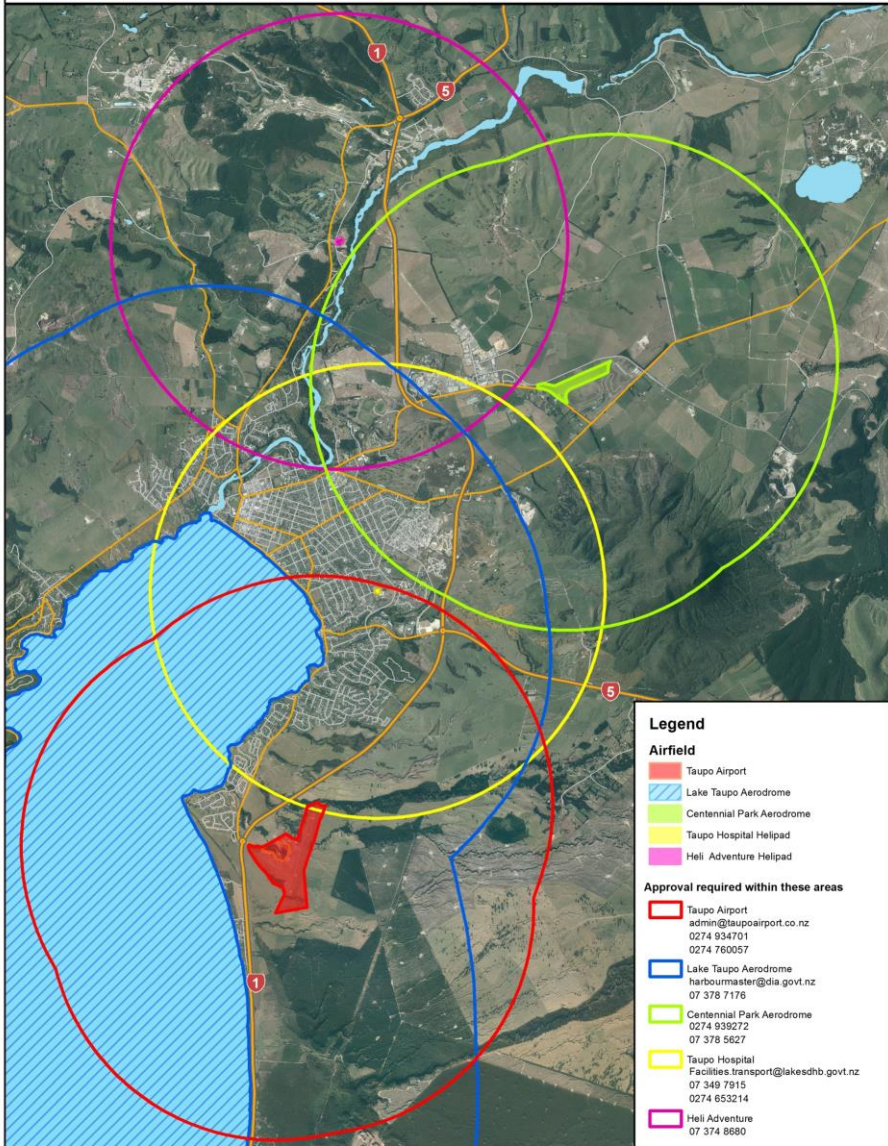
### **Safety Management Systems**

The GAP analysis to check whether we are compliant [or not] with regards to Safety Management System CAA Rule Part 100 is progressing steadily. It is anticipated that the airport's implementation plan will be submitted to the CAA by the end of 2017, which is well before the required date of 30 June 2018. Full compliance must be met by 30 June 2021.

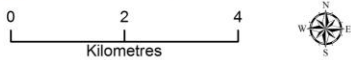
Mike Groome

General Manager – Taupō Airport Authority

Areas requiring approval to operate RPAS/Drones



it is the responsibility of the Operator of RPAS, UAV, UAS, Drones and model aircraft to ensure they fully comply with CAA regulations with particular reference to CAA Rule 101/102.



Map includes Crown Copyright data

Areas requiring approval to operate RPAS/Drones

