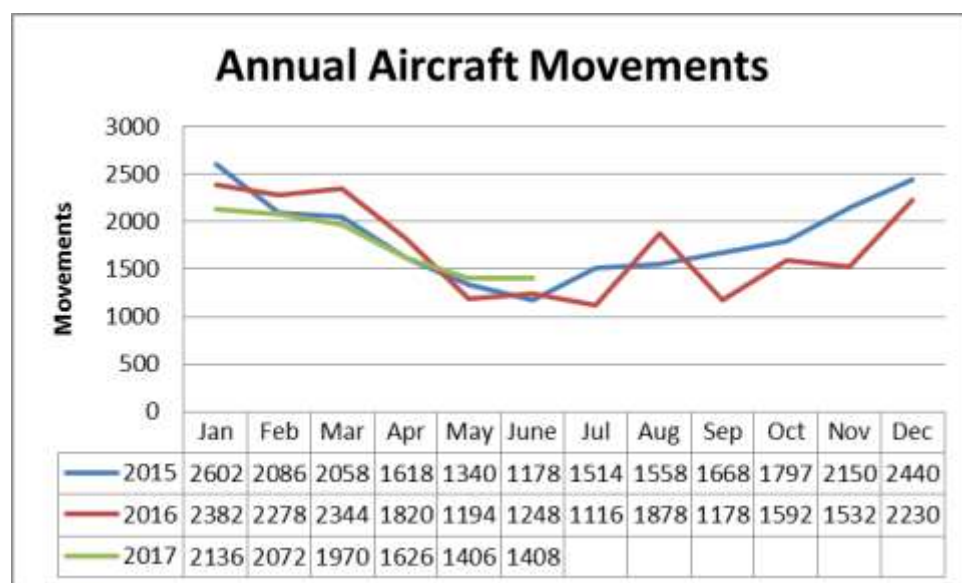


TO: TAUPŌ AIRPORT AUTHORITY COMMITTEE
 FROM: Taupō Airport Manager
 SUBJECT: General Manager's Report – July 2017

Operational

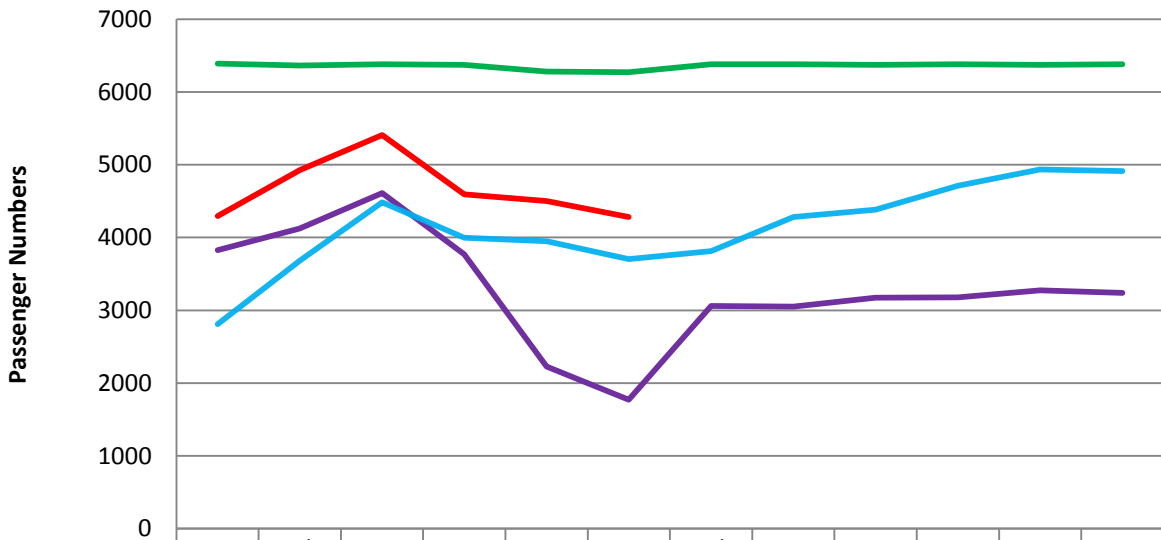
Landing activity	Monthly operated May 2017	Monthly operated May 2016	Cumulative Year 2017	Cumulative Year 2016
Scheduled flights	240	240	1478	1446
Non-scheduled charters	2	0	18	38
General Aviation	390	318	2628	2440
- Helicopter				
- Parachute	480	518	3952	4868
- Private	680	432	5416	4916
- Military	6	2	28	6
Total movements	1408	1192	10654	11266
Note: Helicopter movements are included in General Aviation movements.				



Aircraft movements for the month of June tracked slightly ahead of last year by 216.

Passenger Activity	Month June 2017	Monthly Load Factor	Month June 2016	Cumulative Year 2017	Cumulative Load Factor 2017	Cumulative Year 2016
Scheduled flights	245		240	1479		1222
Air New Zealand	3370	60%	3433	23781	67%	18589
Sounds Air	667	61%	663	3983	61%	4040
Total passengers	4282		4096	29243		23851

Total Passengers



	Jan	Feb	Mar	Apr	May	Jun	Jul	Aug	Sep	Oct	Nov	Dec
2015	3826	4124	4612	3769	2228	1773	3060	3050	3172	3180	3275	3240
2016	2810	3683	4484	3999	3950	3703	3813	4280	4382	4712	4936	4913
2017	4294	4928	5410	4594	4501	4282						
Capacity	6388	6361	6379	6370	6279	6270	6379	6379	6370	6379	6370	6379

Passenger numbers are still well ahead of last year by 5192 however, there was a slight decrease in Air New Zealand loadings in June. As per the above graph, the decrease is seasonal which starts in March, and then increases again from July.

Operations Report

Taxiway Repairs

Loose stones on the intersection of runway 29 taxiway continue to be detrimental to aircraft. The loose material can cause prop damage. We are in the process of costing up strengthening the corner by introducing asphalt, therefore widening the corner and minimising loose stones.

Taxiway signage

Due to stormy weather the Bravo Taxiway Sign became unattached from its stand. As part of CAA requirements we will be replacing and adding new taxiway signage including the Bravo Taxiway Sign. This will be a joint effort between Airways and the Taupo Airport Authority (TAA).

Table Top Exercise

Air New Zealand, Taupō, recently conducted a Table Top Exercise. TAA were included in the exercise which was based on a Q300 about to start up on the Apron, with inbound passenger on board and needing to evacuate the aircraft due to smoke in the fuselage. TAA are required to complete a table top exercise every alternate year and a full emergency exercise every alternate year (Table Top Exercise notes attached).

RPAS (Drone) App

The 'Taupō Drone' App is now available to download through the App store on both Android and Apple. We have also embedded the link on the Taupo Airport Website www.taupoairport.co.nz Several Drone operators are using the app and we are gathering feedback before we consider a media release.

The Water Pump Station

We have recently had several water outages resulting in no water to aerodrome lease holders and the terminal for short periods of time. Also commercial trucks filling from the airport hydrants will cause very low water pressure and sometimes no water to residents. As the pump station is maintained and managed by the Taupo District Council (TDC), we have asked that commercial vehicles are not given a permit to obtain water from our facility. Any power outage or electrical problem will also cause the water outage. We are continuing to monitor and work with TDC to overcome this problem.

Staff Training

Through TDC, Kim Gard is attending a two day ICAM Investigation Training Course. The course content includes understanding causal analysis through formal investigations to ensure adequate corrective actions are implemented. Mike Groome will be attending a similar course later in the year.

Security

Access to aprons and operational areas at regional airports has become a focus of the Civil Aviation Authority. The CAA is proposing to implement the following changes:

All access to the security area is limited to persons either –

- (i) holding and displaying either an Airport Identity Card issued by the Aviation Security Service or a current Pilots Licence, and have a legitimate reason for being in the area; or*
- (ii) accompanied by, and under the direct supervision of, a person holding and displaying an Airport Identity Card issued by the Aviation Security Service or a current Pilots Licence.*

The NZ Airports Association is overseeing discussions with the CAA on behalf of regional airports. There are many regional airports with varied levels of activity that is not limited to airline activities only. More detailed clarification of what is/what is not a security area is yet to be identified however, the inference is that airport ID cards will be required by anyone in a security or operational area. We believe this is unnecessary for a small airport like Taupō, as we have tenants and other users who will not have an ID card or pilots licence.

Around six months ago we prohibited unauthorised vehicle access to the apron area in front of the terminal, as we defined this as a security area due to airline and jet charter operations. We will continue to monitor this space closely.

Regarding TAA, there has been no issues with security of late which we are aware of.

Baggage Claim

Plans and consent applications currently lodged with Council. Construction will commence upon receipt of approved consents.

Taupō Airport Master Plan

AirBiz are in the process of finalising this plan which should be in hand by the meeting date.

Safety Management Systems

We now have a web-based incident reporting system for reporting of accidents, incidents, inspections and observations. This system has been specifically designed for aviation activities, and in particular airports. We trialled the system over the past year and now have the full live version. This allows airport staff and contractors to log incidents directly in the system and removes the need to complete paperwork.

Mike Groome

General Manager – Taupō Airport Authority