

**I give notice that  
a Mangakino-Pouakani Representative Group Meeting will be held on:**

<b>Date:</b>	<b>Tuesday, 15 October 2024</b>
<b>Time:</b>	<b>10.00am</b>
<b>Location:</b>	<b>Mangakino Community Hub Civic Centre Rangatira Drive Mangakino 3421</b>

# **AGENDA**

## **MEMBERSHIP**

<b>Chairperson</b>	Cr Kirsty Trueman
<b>Deputy Chairperson</b>	Cr Yvonne Westerman
<b>Members</b>	Ms Charlene Campbell Mr Whitu Karauna Cr Anna Park Mr Mark Seymour Ms Sapphire Tanirau Mayor David Trewavas
<b>Quorum</b>	4

**Julie Gardyne  
Chief Executive**

## Order Of Business

<b>1</b>	<b>Karakia</b>	
<b>2</b>	<b>Whakapāha   Apologies</b>	
<b>3</b>	<b>Ngā Whakapānga Tukituki   Conflicts of Interest</b>	
<b>4</b>	<b>Whakamanatanga O Ngā Meneti   Confirmation of Minutes</b>	
4.1	Mangakino-Pouakani Representative Group Meeting - 20 August 2024 .....	3
<b>5</b>	<b>Ngā Ripoata   Reports</b>	
5.1	Public Forum .....	4
5.2	Update from Mercury - Whakamaru Battery Consenting Framework.....	5
5.3	Whakamaru Waterski Association - Request for New Lease .....	6
5.4	Mangakino Dump Station.....	9
5.5	Update on the Future Development Strategy and changes to the District Plan .....	15
5.6	Taupō District Council Traffic Control Device Update - Mangakino Ward.....	16
5.7	Mangakino Pouakani Snapshot .....	19
5.8	Members' Reports .....	21
<b>6</b>	<b>Ngā Kōrero Tūmataiti   Confidential Business</b>	
	Nil	

**4.1 MANGAKINO-POUAKANI REPRESENTATIVE GROUP MEETING - 20 AUGUST 2024**

**Author:** Dana Periam, Legal and Governance Coordinator

**Authorised by:** Nigel McAdie, Legal and Governance Manager

**NGĀ TŪTOHUNGA | RECOMMENDATION(S)**

That the minutes of the Mangakino-Pouakani Representative Group meeting held on Tuesday 20 August 2024 be approved and adopted as a true and correct record.

**NGĀ TĀPIRIHANGA | ATTACHMENTS**

1. **Mangakino-Pouakani Representative Group Meeting Minutes - 20 August 2024**

**5.1 PUBLIC FORUM**

**Author:** David Rameka, Iwi and Co-Governance Manager

**Authorised by:** Warrick Zander, General Manager Strategy and Environment

**TE PŪTAKE | PURPOSE**

To receive comments from members of the public on matters specified on this agenda or, if time permits, on other Committee matters.

**NGĀ KŌRERORERO | DISCUSSION**

Standing Orders provide for a period of up to 30 minutes to be made available at the start of meetings for members of the public to bring matters to the attention of the Mangakino-Pouakani Representative Group. Any issue, idea or matter raised in public forum must fall within the Group's terms of reference.

Speakers can speak for up to 5 minutes. Where the number of speakers presenting in the public forum exceeds 6 in total, the chairperson has discretion to restrict the speaking time permitted for all presenters. Members of the public wishing to address the Group during public forum should register at least one clear day before the meeting by emailing [publicforum@taupo.govt.nz](mailto:publicforum@taupo.govt.nz).

No debate or decisions will be made at the meeting on issues raised during the forum unless related to items already on the agenda. Items not on the agenda may only be discussed if the matter is minor in nature and the procedures set out in Standing Order 9.13 are followed. A meeting may deal with (i.e. make a resolution in respect of) an item of business not on the agenda only if the procedures set out in Standing Order 9.12 are followed.

The relevant extracts from Standing Orders are **attached**.

**WHAKAKAPINGA | CONCLUSION**

It is recommended that the Mangakino-Pouakani Representative Group receives comments from members of the public.

**NGĀ TŪTOHUNGA | RECOMMENDATION(S)**

That the Mangakino-Pouakani Representative Group receives comments from members of the public.

**NGĀ TĀPIRIHANGA | ATTACHMENTS**

1. Extracts from Standing Orders 2022-2025

**5.2 UPDATE FROM MERCURY - WHAKAMARU BATTERY CONSENTING FRAMEWORK**

**Author:** David Rameka, Iwi and Co-Governance Manager

**Authorised by:** Warrick Zander, General Manager Strategy and Environment

**TE PŪTAKE | PURPOSE**

Ryan Piddington, Strategic Consents Manager and Katy Scoullar, Community Engagement Manager from Mercury will be present to give an update to the committee on the Whakamaru Battery Consenting Framework.

**WHAKAKAPINGA | CONCLUSION**

It is recommended that the information is received.

**NGĀ TŪTOHUNGA | RECOMMENDATION(S)**

That the Mangakino-Pouakani Representative Group receives the update from Mercury regarding the Whakamaru Battery Consenting Framework.

**NGĀ TĀPIRIHANGA | ATTACHMENTS**

Nil

**5.3 WHAKAMARU WATERSKI ASSOCIATION - REQUEST FOR NEW LEASE**

**Author:** Billie Vi, Parks Advisor - Planning and Operations

**Authorised by:** Greg Hadley, Parks and Reserves Manager

**TE PŪTAKE | PURPOSE**

For the Mangakino-Pouakani Representative Group as administrator of Mangakino and Whakamaru reserves to consider renewing Whakamaru Waterski Association's lease for part of Whakamaru Recreation Reserve.

**WHAKARĀPOPOTOTANGA MATUA | EXECUTIVE SUMMARY**

Whakamaru Waterski Association (**the Club**) has had a track record of successful leases with Council over the past 28 years. The first from 1991-2005 and the second from 2005-2019. Both leases were granted for 14 years. Since its latest expiry date, the Club request a new lease to continue its recreational activities on part of the Whakamaru Recreation Reserve (**reserve**).

The Mangakino and Whakamaru Reserve Management Plan 2000 (**RMP**) allows, at the discretion of the committee, to grant leases for the purpose of recreation activities for a period of up to 14 years. When the committee approves a lease, appropriate conditions contained in the Reserves Act 1977 (**the Act**) will be imposed, more specifically the requirements stated in Section 54 of the Act.

Based on this, there are 2 options:

1. Decline to renew the lease (status quo).
2. Agree to grant a new lease to Whakamaru Waterski Association, back dated to 1 December 2019.

It is considered on analysis that the preferred alternative is Option 2.

**NGĀ TŪTOHUNGA | RECOMMENDATION(S)**

That the Mangakino-Pouakani Representative Group agrees to grant a new lease to the Whakamaru Waterski Association under Section 54 (1)(c) of the Reserves Act 1977 for a period of up to 14 years commencing 1 December 2019 and ending 30 November 2033.

**TE WHAKAMAHUKI | BACKGROUND**

The proposal has been before a Mangakino Pouakani Sub-Committee meeting on April 10, 2007. The following resolution was made:

That the Taupō District Council grant a new lease to the Whakamaru Water Ski Club over the land described in the schedule hereto for a fixed term of 14 years.

Schedule: 8587 metres square more or less being part section 17 SO 44296 situated in Block XI Whakamaru SD.

There are currently two leases over the reserve. This includes the Club's lease, and a grazing lease. The Club's relationship with Council has been ongoing since 1991, during this time the Club has provided its own facilities and services for its club room occupying the reserve. The public toilet and playground located on site are Council owned and maintained facilities. Council have ensured the reserve's noxious weeds have been managed or eradicated in accordance with Environment Waikato's Regional Pest Management Strategy.

**NGĀ KŌRERORERO | DISCUSSION**

The Club's building is situated at Whakamaru Recreation Reserve, located south of Whakamaru village, bordered by the Waikato River. Entry to the reserve is gained from Pokuru Road and the reserve area is approximately 13.9 hectares. It is part of Section 17 SO 44296 and Pr Sec 3 SO44791 Block XI Whakamaru Survey District.

The RMP is dated but the leases and licences policy allow the committee to conditionally approve leases and licences for use of reserves where it is consistent with the provisions of the Act. Section 54 of the Act permits leases of recreation reserves by clubs and organisations who utilise the area for recreational activities.

**NGĀ KŌWHIRINGA | OPTIONS**Analysis of Options

Option 1. Decline to grant a new lease.

Advantages	Disadvantages
<ul style="list-style-type: none"> <li>No further administrative work for Council.</li> </ul>	<ul style="list-style-type: none"> <li>The conclusion of a recreational activity for the community provided for at this reserve.</li> <li>The Club will have to relocate its club rooms.</li> </ul>

Option 2. Agree to grant a new lease to Whakamaru Waterski Association, back dated to 1 December 2019.

Advantages	Disadvantages
<ul style="list-style-type: none"> <li>The continuation of the recreational activity at the reserve for the community.</li> <li>The continuation of a successful lease between the Club and Council.</li> </ul>	<ul style="list-style-type: none"> <li>None foreseen.</li> </ul>

Analysis Conclusion:

Based on the analysis of options, the preferred alternative is option 2.

**NGĀ HĪRAUNGA | CONSIDERATIONS****Ngā Aronga Pūtea | Financial Considerations**

There is no financial impact on Council.

**Ngā Aronga Ture | Legal Considerations**Local Government Act 2002

The matter comes within scope of the Council's lawful powers, including satisfying the purpose statement of [Section 10](#) of the Local Government Act 2002. That section of the Act states that the purpose of local government is (a) to enable democratic local decision-making and action by, and on behalf of, communities; and (b) to promote the social, economic, environmental, and cultural well-being of communities in the present and for the future. It is considered that social and environmental factors are of relevance to this particular matter.

**Ngā Hīraunga Kaupapa Here | Policy Implications**

There are no known policy implications.

**Te Kōrero tahi ki te Māori | Māori Engagement**

Taupō District Council is committed to meeting its statutory Tiriti O Waitangi obligations and acknowledges partnership as the basis of Te Tiriti. Council has a responsibility to act reasonably and in good faith to reflect the partnership relationship, and to give effect to the principles of Te Tiriti. These principles include, but are not limited to the protection of Māori rights, enabling Māori participation in Council processes and having rangatiratanga over tāonga.

Our statutory obligations outline our duties to engage with Māori and enable participation in Council processes. Alongside this, we recognise the need to work side by side with iwi, and hapū of our district.

**Ngā Tūraru | Risks**

There are no known risks.

**TE HIRANGA O TE WHAKATAU, TE TONO RĀNEI | SIGNIFICANCE OF THE DECISION OR PROPOSAL**

Council's Significance and Engagement Policy identifies matters to be taken into account when assessing the degree of significance of proposals and decisions.

Officers have undertaken an assessment of the matters in the [Significance and Engagement Policy \(2022\)](#), and are of the opinion that the proposal under consideration is of a low degree of significance.

**TE KŌRERO TAHI | ENGAGEMENT**

Taking into consideration the above assessment, that the decision is of a low degree of significance, officers are of the opinion that no further engagement is required prior to Council making a decision.

**WHAKAKAPINGA | CONCLUSION**

The Whakamaru Waterski Association has had a long relationship with Taupō District Council. Its success has continued to provide a place for the community to enjoy recreational activities on the reserve and in the water.

The Reserve Management Plan is dated, but the policies identified with leases and licences is still applicable to recreation reserves. It would be supported for a new lease to the club for its club room, services and facilities.

**NGĀ TĀPIRIHANGA | ATTACHMENTS**

1. 1991 Map of Lease Area
2. 2024 Map of Lease Area



**5.4 MANGAKINO DUMP STATION**

**Author:** Greg Hadley, Parks and Reserves Manager

**Authorised by:** Warrick Zander, General Manager Strategy and Environment

**TE PŪTAKE | PURPOSE**

To present options for the siting of the campervan dump station in Mangakino.

**WHAKARĀPOPOTOTANGA MATUA | EXECUTIVE SUMMARY**

The New Zealand Motor Caravan Association dump station is currently sited at the Mangakino Rugby Ground reserve in Wairenga Road, Mangakino. At the time it was installed, agreement was obtained from the Mangakino Community Agency to site the dump station alongside the former rugby clubrooms building.

Recently, Council has received complaints from the Sports Hub user groups in relation to issues associated with the siting of the dump station. Officers were requested by the representative group to look at possible options to re-site the dump station.

**NGĀ TŪTOHUNGA | RECOMMENDATION(S)**

The recommendation option is the Mangakino-Pouakani Representative Group supports the relocation of the Mangakino dump station to a more suitable position on the current site, subject to confirmation of funding in the 2024-2025 Annual Plan.

**TE WHAKAMAHIKI | BACKGROUND**

The proposal has been before Council at a prior meeting, 17 May 2016.

In 2009 the New Zealand Motor Caravan Association approached Council to site a dump station in Mangakino. The town was becoming increasingly popular as a destination for motor caravans, many of

which were the larger self-contained type that required disposal facilities to empty the waste products from on-board storage tanks.

Several sites were investigated. The sites needed to be located in close proximity to reticulated sewer and water and, have suitable access for larger vehicles to manoeuvre. The rugby club reserve was chosen as the preferred site. An agreement to site the facility on the side of the [former] rugby clubrooms was obtained from the owners of the building, the Mangakino Community Agency.

The dump station and associated fittings were supplied by the New Zealand Motor Caravan Association and installed by Council in September 2009.

In 2012 the Mangakino Community Agency board and management changed. New staff were appointed to oversee the youth club activities in the former rugby club building. Staff at the youth club expressed concerns about the facility in general and in particular the illegal dumping of rubbish. They reported that bags of rubbish had been left at the site, it was assumed by campervan owners. Council staff requested that all incidents of illegal dumping be referred to Council staff for actioning and the issue was resolved. A neighbour had also voiced concerns about dust and requested the road be resurfaced.

In 2016 a report was presented to the Mangakino-Pouakani Representative Group with various options of where the dump station may be re-sited. The resolution that members adopted was the Committee *endorses* that the dump station remains at its current site and that staff investigate remedial actions such as road surfacing and screen planting to mitigate some of the issues with the site.

The road was resurfaced, and fencing was installed around the site, however no screen planting was undertaken.

## **NGĀ KŌRERORERO | DISCUSSION**

Following the complaints received, staff have investigated other possible locations where a dump station facility could be sited.

Dump station facilities are generally 'out of sight, out of mind' and are often located at wastewater plants or, in industrial/ commercial areas such as service stations away from residential properties. Similar types of locations were considered in Mangakino however access is limited at the wastewater treatment plant. The site is also unattended so site security and safety concerns would make access difficult. Additionally, there is only one part of the plant that currently accepts untreated sewage which is at the rear of the site and difficult to access. All other inflows to the plant have undergone some form of primary treatment/screening prior to arriving at the site.

Any areas of an 'industrial' nature in Mangakino [including the Council depot] are serviced by small capacity 'domestic' septic tanks which are unsuitable for the shock loading from campervans.

Holding tanks were also investigated however they can be problematic and expensive in the long term so this has also been ruled out.

It is not known if all or part of the existing installation could be recovered and reused or if a new dump station kit would need to be obtained from the New Zealand Motor Caravan Association.

The cost of installing the dump station kit generally sits with Council and will vary dependent on the site chosen.

Because the factors involved (service connections, wash down facility, hard stand for vehicles etc.) with each of the sites, accurate costings have not been obtained at this time.

## **NGĀ KŌWHIRINGA | OPTIONS**

### Analysis of Options

Options considered include removal of the existing facility status quo and, a number of possible sites around Mangakino.

Site selection was based on the following:

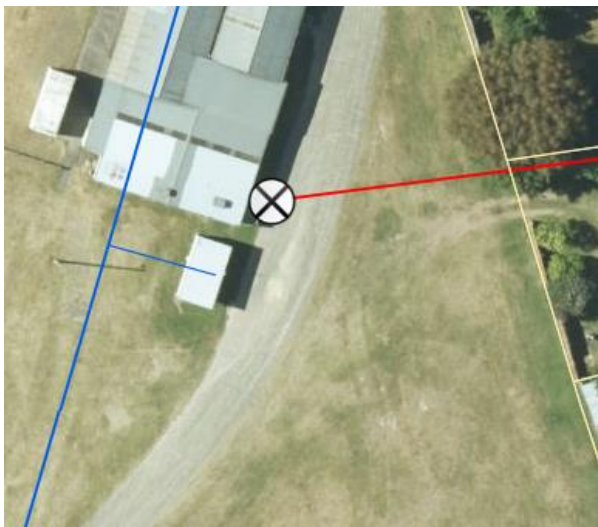
1. Land for the dump station facility was Council owned. Siting on private land would not involve Council.
2. Access to existing sewer and water reticulation to connect for disposal of waste and water supply for a wash-down facility.
3. Access available for large vehicles and the ability to manoeuvre safely through the site.
4. A degree of separation/isolation from residential properties.

The sites for consideration are identified and discussed in Options below:

**Option 1. Remove the dump station installation.**

Advantages	Disadvantages
<ul style="list-style-type: none"> <li>• The Sports Hub concerns are addressed.</li> <li>• Minimal cost to Council.</li> </ul>	<ul style="list-style-type: none"> <li>• Council reputation potentially damaged – removing an existing service.</li> <li>• Possible down-turn in the number of freedom campers coming to Mangakino although they are here for the camping experience.</li> </ul>

**Option 2. Status quo.**



Advantages	Disadvantages
<ul style="list-style-type: none"> <li>• No cost to Council to move the dump station facility.</li> <li>• No updates required to NZMCA database.</li> </ul>	<ul style="list-style-type: none"> <li>• Concerns raised by Sports Hub users not addressed.</li> </ul>

**Option 3. Relocating the dump station to the eastern side of the site.**



Advantages	Disadvantages
<ul style="list-style-type: none"> <li>• Less expensive option.</li> <li>• No updating of NZMCA database required.</li> </ul>	<ul style="list-style-type: none"> <li>• Concerns of the Sports Hub users will only be partially allayed.</li> </ul>

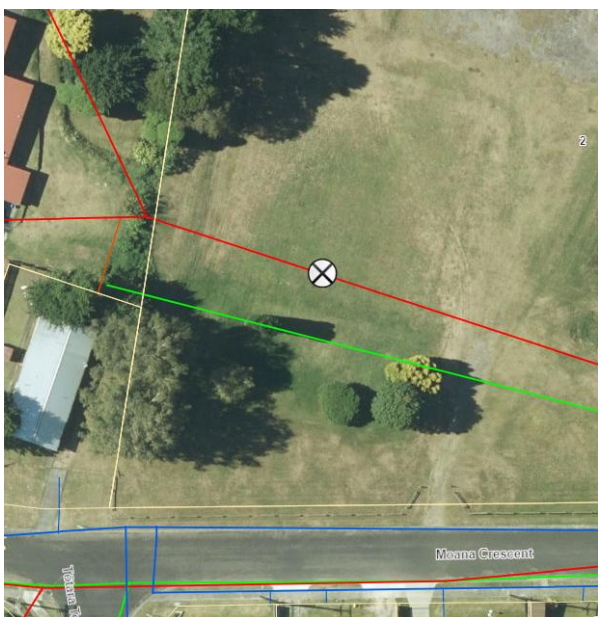
<ul style="list-style-type: none"> <li>• Suitable site with low visibility.</li> </ul>	<ul style="list-style-type: none"> <li>• Cost to move the dump station. Infrastructure, (water and wastewater connections) wash-down and extended form hard access.</li> </ul>
--	--

**Option 4. Relocate the dump station to 14 College Street.**



Advantages	Disadvantages
<ul style="list-style-type: none"> <li>• Council owned land.</li> <li>• Wastewater services present.</li> <li>• Reasonably isolated from residential properties (though not commercial activities).</li> <li>• Vehicular access is good.</li> </ul>	<ul style="list-style-type: none"> <li>• High visibility to the Mangakino Community Hall and Skate Park. It would require screening.</li> <li>• Cost to Council would be considerable to form an access road, connection to services notably water.</li> <li>• Would require a section of the road to be formed, vehicle crossings etc.</li> </ul>

**Option 5. Relocate the dump station to Mangakino Recreation reserve (between Moana Crescent and Lake Road).**



Advantages	Disadvantages
<ul style="list-style-type: none"> <li>• Sewer and water accessible.</li> <li>• Neighbouring properties could be screened with planting.</li> <li>• Reserve is owned by Council and is the designated camping area in the current (dated) Reserve Management Plan.</li> <li>• Would support any future campground plans.</li> </ul>	<ul style="list-style-type: none"> <li>• Site visible from a number of properties in Moana Crescent and Lake Road, although the site could be screened there may still be concerns.</li> <li>• Access to site is currently a rudimentary 'track'. Would require upgrading to provide suitable access.</li> <li>• Marae committee do not support this site.</li> </ul>

#### Analysis Conclusion:

The preferred option is Option 3 to relocate the dump station on the Rugby Club Reserve. Explore potential initiatives such as screen planting, controlling hours of operation to work around Sports Hub activities (used at other installations in other communities).

## **NGĀ HĪRAUNGA | CONSIDERATIONS**

### **Ngā Aronga Pūtea | Financial Considerations**

The financial impact of the proposal would vary depending on the option selected. Costs would start at approx. \$500 for Option 1 up to an estimated \$20,000 - \$40,000 for Options 3-5.

#### Annual Plan

This is not currently budgeted for, and any expenditure would be part of an annual plan budget. This would also allow time to more accurately scope and cost the preferred option.

### **Ngā Aronga Ture | Legal Considerations**

#### Local Government Act 2002

The matter comes within scope of the Council's lawful powers, including satisfying the purpose statement of [Section 10](#) of the Local Government Act 2002. That section of the Act states that the purpose of local government is (a) to enable democratic local decision-making and action by, and on behalf of, communities; and (b) to promote the social, economic, environmental, and cultural well-being of communities in the present and for the future. It is considered that social economic environmental and cultural well-beings are of relevance to this particular matter.

### **Ngā Hīraunga Kaupapa Here | Policy Implications**

There are no known policy implications.

### **Te Kōrero tahi ki te Māori | Māori Engagement**

Taupō District Council is committed to meeting its statutory Tiriti O Waitangi obligations and acknowledges partnership as the basis of Te Tiriti. Council has a responsibility to act reasonably and in good faith to reflect the partnership relationship, and to give effect to the principles of Te Tiriti. These principles include but are not limited to the protection of Māori rights, enabling Māori participation in Council processes and having rangatiratanga over tāonga.

Our statutory obligations outline our duties to engage with Māori and enable participation in Council processes. Alongside this, we recognise the need to work side by side with iwi, and hapū of our district.

### **Ngā Tūraru | Risks**

The complete removal of the facility could generate a negative response from the New Zealand Motor Campervan Association. Depending on where any new site was located a degree of negative feedback could be expected from the community.

## **TE HIRANGA O TE WHAKATAU, TE TONO RĀNEI | SIGNIFICANCE OF THE DECISION OR PROPOSAL**

Council's Significance and Engagement Policy identifies matters to be taken into account when assessing the degree of significance of proposals and decisions.

Officers have undertaken an assessment of the matters in the [Significance and Engagement Policy \(2022\)](#), and are of the opinion that the proposal under consideration is of a low degree of significance.

**TE KŌRERO TAHI | ENGAGEMENT**

Taking into consideration the above assessment, that the decision is of a low degree of significance, officers are of the opinion that no further engagement is required prior to Council making a decision.

**WHAKAKAPINGA | CONCLUSION**

There is relatively low acceptance in the community to accept waste products from campervans, some of whom do not stay or bring any benefit to the local economy.

All sites considered bring with them a variety of issues to overcome and any of the new sites could potentially generate more concerns from the community than the current one.

Removal of the facility altogether would be a popular option with those in the community who oppose the free dumping of waste from campervans. The recommendation option is the Mangakino-Pouakani Representative Group supports the relocation of the Mangakino dump station to a more suitable position on the current site, subject to confirmation of funding in the 2024-2025 Annual Plan.

**NGĀ TĀPIRIHANGA | ATTACHMENTS**

Nil

**5.5 UPDATE ON THE FUTURE DEVELOPMENT STRATEGY AND CHANGES TO THE DISTRICT PLAN**

**Author:** Tanya Wood, Senior Policy Advisor

**Authorised by:** Nick Carroll, Policy Manager

**PURPOSE**

To provide the Mangakino Pouakani Representative Group with a verbal update on the Future Development Strategy and plan changes to the District Plan.

**CONCLUSION**

It is recommended that the information is received.

**RECOMMENDATION(S)**

That the Mangakino-Pouakani Representative Group receives the information on the Future Development Strategy and plan changes to the District Plan.

**ATTACHMENTS**

Nil

**5.6 TAUPŌ DISTRICT COUNCIL TRAFFIC CONTROL DEVICE UPDATE - MANGAKINO WARD**

**Author:** Claire Sharland, Asset Manager Transportation

**Authorised by:** Roger Stokes, Infrastructure Manager

**TE PŪTAKE | PURPOSE**

To update the Taupō District Council traffic controls or prohibitions on roads or public spaces, in accordance with the Taupō District Council Traffic Bylaw 2014 in the Mangakino Ward.

**WHAKARĀPOPOTOTANGA MATUA | EXECUTIVE SUMMARY**

The Taupō District Council Traffic controls may be updated from time to time with new controls or prohibitions.

**NGĀ TŪTOHUNGA | RECOMMENDATION(S)**

That, pursuant to the Taupō District Council Traffic Bylaw, the Mangakino-Pouakani Representative Group imposes the following traffic controls and/or prohibitions on roads and/or public spaces in the Taupō District:

Sign/Marking	Why	Where
1. Install Give Way signage and markings at uncontrolled intersection.	Necessary to clearly instruct drivers to yield to traffic on the intersecting road, ensuring safer and smoother merging or crossing.	At the intersection of Wereta Road and Otake Road, Marotiri.

**TE WHAKAMAHUKI | BACKGROUND**

Council must make a resolution whenever a sign or marking on the road is recommended or recommended to be changed, and as a consequence, controls or prohibits the use of a road or public space.

The Taupō District Council Traffic Control Device Register (the Register) sets out all the signs and markings which control and prohibit the use of a road or public space in the Taupō District.

Council has delegated the power to make changes to the traffic control device register relating to roads and public spaces in the Mangakino Ward to the Mangakino-Pouakani Representative Group Committee.

**NGĀ KŌWHIRINGA | OPTIONS**

The two options before the Committee are:

- 1) Accept the recommendation to amend and update the controls; or
- 2) Do not accept the recommendation to amend and update the controls.

It is recommended that the Committee accepts the recommendation to update and amend the controls.

**NGĀ HĪRAUNGA | CONSIDERATIONS**

The controls require updating to incorporate the following new signs and markings:

Sign/Marking	Why	Where
1. Install Give Way signage and markings at uncontrolled intersection	Necessary to clearly instruct drivers to yield to traffic on the intersecting road, ensuring safer and smoother merging or crossing.	At the intersection of Wereta Road and Otake Road, Marotiri.



The above project has been identified through our deficiency database and/or customer service requests. See attachments for the detail of each safety improvement.

### **Wereta Road**

There is no Give Way sign or marking at the Wereta Road end where it intersects with Otake Road, only a chevron sign at the end of the road on Otake Road. A Give Way sign and road marking are needed because this is a Y-shaped intersection, not a T-intersection. Less experienced drivers or those unfamiliar with the road may mistakenly believe it's a continuous curve and fail to yield to eastbound vehicles, which could lead to serious accidents. Therefore, clear giveaway signage and markings are necessary to provide proper guidance to drivers.

### **Ngā Aronga Pūtea | Financial Considerations**

The financial impact of maintenance to the Register does not change and is met within current budgets.

### **Ngā Aronga Ture | Legal Considerations**

#### Local Government Act 2002

The matter comes within scope of the Council's lawful powers, including satisfying the purpose statement of [Section 10](#) of the Local Government Act 2002.

The proposal has been evaluated regarding the Traffic Bylaw 2014, the Land Transport Act 1998 and the associated Rules. Prescribed signs need to be installed to be enforceable by our compliance officers.

### **Ngā Hiraunga Kaupapa Here | Policy Implications**

There are no known policy implications associated with this report.

### **Te Kōrero tahi ki te Māori | Māori Engagement**

Taupō District Council is committed to meeting its statutory Tiriti O Waitangi obligations and acknowledges partnership as the basis of Te Tiriti. Council has a responsibility to act reasonably and in good faith to reflect the partnership relationship, and to give effect to the principles of Te Tiriti. These principles include but are not limited to the protection of Māori rights, enabling Māori participation in Council processes and having rangatiratanga over tāonga.

Our statutory obligations outline our duties to engage with Māori and enable participation in Council processes. Alongside this, we recognise the need to work side by side with the ahi kaa / resident iwi of our district. Engagement may not always be required by law, however meaningful engagement with Māori allows Council to demonstrate good faith and our commitment to working together as partners across our district.

Appropriately, the report author acknowledges that they have considered the above obligations including the need to seek advice, guidance, feedback and/or involvement of Māori on the proposed recommendation/s, objective/s, project/s or service/s outlined within this report. No engagement is needed on this agenda item.

### **Ngā Tūraru | Risks**

This action is expected to enhance road safety. There are no procedural risks in making this change.

### **TE HIRANGA O TE WHAKATAU, TE TONO RĀNEI | SIGNIFICANCE OF THE DECISION OR PROPOSAL**

Council's Significance and Engagement Policy identifies matters to be taken into account when assessing the degree of significance of proposals and decisions.

Officers have undertaken an assessment of the matters in the [Significance and Engagement Policy \(2022\)](#), and are of the opinion that the proposal under consideration is of a low degree of significance.

### **TE KŌRERO TAHI | ENGAGEMENT**

Taking into consideration the above assessment, that the decision is of a low degree of significance, officers are of the opinion that no further engagement is required prior to the Committee making a decision.

### **TE WHAKAWHITI KŌRERO PĀPAHO | COMMUNICATION/MEDIA**

No further communication required.

### **WHAKAKAPINGA | CONCLUSION**

It is recommended that the Committee imposes the traffic controls and prohibitions detailed in the report. Staff will then update the Traffic Control Device Register in accordance with the resolution.

**NGĀ TĀPIRIHANGA | ATTACHMENTS**

1. Proposed Give Way at Wereta and Otake intersection

## 5.7 MANGAKINO POUAKANI SNAPSHOT

**Author:** David Rameka, Iwi and Co-Governance Manager

**Authorised by:** Warrick Zander, General Manager Strategy and Environment

### TE PŪTAKE | PURPOSE

This report provides the Mangakino Pouakani Representative Group with an overview on what is happening and coming up in the rohe.

### NGĀ KŌRERORERO | DISCUSSION

#### Community Engagement and Development

The Community Engagement Advisor – Northern District will give a brief overview of work underway in the community including the Basketball court mural.

#### Mangakino Community Response Plan

The Senior Emergency Management Advisor will present the Mangakino Community Response Plan to the representative group.

#### Mangakino Community Pool

The Lifeguard Operations Team Lead will provide an update on the Mangakino Community Pool ahead of its opening in early December 2024.

#### Actions

Subject	Task	Comments
Mangakino Lakefront Development		The Long-term Plan was adopted on 30 September 2024 and the Mangakino Lakefront Development was included in the project list.
Pouakani Totara tree	Requested this be added to the action sheet for oversight.	Pouakani Tree Planting with Whakamaru School was held on Monday 24 September 2024. The Taupō District Council Parks staff collaborated with kaimahi students from Whakamaru School to extend the forested area outside Pouakani Tōtara. This involved planting on the edges of the carparking area located near the tōtara. Twenty students and two teachers from Whakamaru School joined Council officers in planting 238 trees, shrubs, flax, and ferns. The students had awesome attitudes and thanked officers for including them in this important mahi by performing their school haka.
Whakamaru Basketball court	Requested this be added to the action sheet for oversight.	Mangakino Development removed the existing hoops in their entirety (not cut off) in the Mangakino town centre free of charge on 26 September 2024. The hoops are currently being stored at the Mangakino Parks Depot.  The Whakamaru Residents and Ratepayers Association (WRRRA) are to confirm that an agreement with Mercury (owners of the court) has been sought to install the hoops at this site.  Installation will be arranged once confirmed.  NB. These hoops will be a WRRRA community asset and would not sit on a TDC asset list for maintenance/renewal.
Rural Intersection Lights		The Long-term Plan was adopted on 30 September 2024 and a small budget had been allocated for flag lighting at high-risk rural intersections across the district. The intersections where the lighting would be installed had not been confirmed.
Dump Station Relocation	Requested this be added to the action sheet for oversight.	Agenda item included at this meeting.

**WHAKAKAPINGA | CONCLUSION**

It is recommended that the Mangakino/Pouakani Representative Group notes the information contained in the Mangakino Pouakani Snapshot report.

**NGĀ TŪTOHUNGA | RECOMMENDATION(S)**

That the Mangakino-Pouakani Representative Group notes the information contained in the Mangakino Pouakani snapshot report.

**NGĀ TĀPIRIHANGA | ATTACHMENTS**

1. Mangakino Community Response Plan

**5.8 MEMBERS' REPORTS**

**Author:** Dana Periam, Legal and Governance Coordinator

**Authorised by:** Nigel McAdie, Legal and Governance Manager

**TE PŪTAKE | PURPOSE**

This item permits members to provide feedback on any items of interest arising from meetings they have attended.

No debate and/or resolution is permitted on any of the reports.

**WHAKAKAPINGA | CONCLUSION**

Members' reports will be presented at the meeting for receipt.

**NGĀ TŪTOHUNGA | RECOMMENDATION(S)**

That the Mangakino-Pouakani Representative Group receives the reports from members.

**NGĀ TĀPIRIHANGA | ATTACHMENTS**

Nil