



# **ATTACHMENTS**

## **Tūrangi Co-Governance Committee Meeting**

**3 September 2025**

## Table of Contents

---

4.1	Ordinary Tūrangi Co-Governance Committee Meeting - 6 August 2025	
	Attachment 1 Tūrangi Co-Governance Committee Meeting Minutes - 6 August 2025 .....	3
5.2	Public Forum	
	Attachment 1 Extract from Standing Orders 2022-25.....	10
5.4	Licence to Occupy Unformed Legal Road (Tūrangi Pedestrian Mall) - Tūrangi Craft Market	
	Attachment 1 Site Plan - Tūrangi Craft Market.....	12
	Attachment 2 Draft Letter recording License to Occupy Turangi Craft Market.....	13
	Attachment 3 Turangi Craft Market Risk Register .....	19
5.6	Request for revised easement to The Lines Company Limited for 33kV cable	
	Attachment 1 Relative positions of land affected by 33kV cable .....	20
	Attachment 2 Plan of revised section of 33kV cable route - Lot 52 DP 50585.....	21
	Attachment 3 Report to Tūrangi Co-Governance Committee - Request for Easement to The Lines Company Limited for 33KV Power Cable - 9 July 2025 .....	23
	Attachment 4 Extract from minutes of 9 July 2025 meeting .....	32
5.7	Approval to consult on the draft Tūrangi Reserves Management Plan	
	Attachment 1 Draft Tūrangi Reserves Management Plan .....	33
	Attachment 2 Tūrangi Reserves Context Summary .....	63
5.10	Mana Whakahono Workplan Update	
	Attachment 1 Mana Whakahono workplan update (A3811373).....	94

**TAUPŌ DISTRICT COUNCIL  
MINUTES OF THE TŪRANGI CO-GOVERNANCE COMMITTEE MEETING  
HELD AT THE TE MATAAPUNA, TŪRANGITUKUA PARK, HIRANGI ROAD, TŪRANGI  
ON WEDNESDAY, 6 AUGUST 2025 AT 10.00AM**

**PRESENT:** Mayor David Trewavas (in the Chair until 11.02am), Poumatua Te Wharau Walker (in the Chair from 11.02am), Member Lauren Fletcher, Cr Sandra Greenslade, Member Amanda Martin (until 11.44am), Cr Kevin Taylor, Member Bernice Te Ahuru, Member Amy Walker

**IN ATTENDANCE:** Community Engagement and Development Manager (T Russell), Iwi and Co-Governance Manager (D Rameka), Parks and Reserves Manager (G Hadley), Executive Manager Mayor's Office (J Later), Iwi Engagement Partner (T Waaka), Southern Lake Taupō Engagement Partner (M Isherwood), Iwi and Co-Governance Advisor (A Kereopa), Team Leader Reserve Management (E O'Callaghan), Senior Policy Advisor (K Scott), Parks Advisor Planning and Operations (B Vi), Policy Advisor (H Wood), Environmental Advisor (E Naylor), Team Leader Customer Support (J Cathro), Customer Support Officer Tūrangi (T Dallavanzi), Senior Committee Advisor (K Watts)

**MEDIA AND PUBLIC:** 14 members of the public

Notes: (i) Items were considered in the following order: 1, 5.1, 2, 3, 4.1, 5.2-5.8  
(ii) Mayor David Trewavas left the meeting at 11.02am. He was not present for resolutions TCG202508/06-09.  
(iii) Member Amanda Martin left the meeting at 11.44am. She was not present for resolution TCG202508/09.

**1 KARAKIA**

All present recited the opening karakia.

**2 WHAKAPĀHA | APOLOGIES**

Nil

**3 NGĀ WHAKAPĀNGA TUKITUKI | CONFLICTS OF INTEREST**

Nil

**4 WHAKAMANATANGA O NGĀ MENETI | CONFIRMATION OF MINUTES**

**4.1 ORDINARY TŪRANGI CO-GOVERNANCE COMMITTEE MEETING - 9 JULY 2025**

**TCG202508/01 RESOLUTION**

Moved: Cr Sandra Greenslade

Seconded: Member Amy Walker

That the minutes of the Tūrangi Co-Governance Committee meeting held on Wednesday 9 July 2025 be approved and adopted as a true and correct record.

**CARRIED**

Note: All members present at the Tūrangi Co-Governance Committee meeting voted in favour of resolution TCG202508/01 above.

**5 NGĀ KAUPAPA HERE ME NGĀ WHAKATAUNGA | POLICY AND DECISION MAKING****5.1 ELECTION OF CO-CHAIR | POUMATUA FOR THE MEETING****TCG202508/02 RESOLUTION**

Moved: Cr Sandra Greenslade  
Seconded: Member Amanda Martin

That the Tūrangi Co-Governance Committee appoints Co-Chair Mayor David Trewavas to Chair this hui.

**CARRIED**

*Note: All members present at the Tūrangi Co-Governance Committee meeting voted in favour of resolution TCG202508/02 above.*

**5.2 PUBLIC FORUM**

The following members of the public had registered to speak to the committee members:

**Mr Murray Nielsen**

Mr Nielsen addressed the committee regarding item 5.4 Customer request for tree removal on Paekiri Street, Tūrangi. He understood that not all trees were removed in the completed kerb and channel project but this tree was impacting negatively on his property. It was a native to North America and would live for over 300 years, growing tall and spreading branches widely.

The tree was a nuisance in that it shaded his property in summer, branches fell regularly onto his property, and roots were growing in his property. He could not use the back of his section due to the tree and his spouting was continually being blocked. His neighbours had also been impacted. The tree was no longer fit for purpose and did not comply with Council's Tree and Vegetation Policy. The leaves were a nuisance and created a slippery hazard when it was wet. Oak trees were more suitable as reserve specimen trees, not kerb trees. He suggested that Council remove these trees from berms. He also advised that silver birch trees should be considered to be removed because they had started to self seed along the lower Tongariro River.

**Mr DJ Flavell and Mr Zane Cozens**

Mr Cozens spoke on Mr Flavell's behalf. He explained that Mr Flavell was local to Tūrangi and employed other locals in his business Tūrangi Tree Fellas. He was disappointed that he had missed out on the opportunity to provide a quote and tender for a tree removal job at Te Kapua park recently. This work was carried out by contractors from Hamilton.

He felt that there was a missing link between communications between Council and the people, and asked elected and appointed members to be aware of the procurement policy. He asked that they consider a weighted system where preference was given to local contractors.

Members supported locals being selected for these types of jobs and requested that Council staff provide support to break down barriers such as the procurement process.

**TCG202508/03 RESOLUTION**

Moved: Poumatua Te Wharau Walker  
Seconded: Member Amanda Martin

That the Tūrangi Co-Governance Committee receives comments from members of the public.

**CARRIED**

*Note: All members present at the Tūrangi Co-Governance Committee meeting voted in favour of resolution TCG202508/03 above.*



### 5.3 TŪRANGI RANGATAHI IN MAHI

Ms Gina Pohe introduced herself and explained that she was contracted to lead the Rangatahi in Mahi project. She presented a PPT (A3806885) sharing challenges and learnings from the contract with Ministry of Social Development (MSD).

The purpose of the Mayor's Taskforce for Jobs project Tūrangi Rangatahi in Mahi was to respond to the needs and aspirations of Tūrangi rangatahi. Many rangatahi facing barriers in Tūrangi were not able to access government support via MSD because they were aged between 15 and 18 years.

Over the 8 months of the project, 32 contacts were made and 27 of them engaged with the programme. As the rangatahi were at different levels, 1 on 1 support was given to support job applications via CV and cover letter writing, building confidence for interviews, and assisting with theory and practical lessons for the rangatahi to get their driver licenses.

She explained that 10 had been placed in full time employment, three had entered tertiary training, one had returned to school and three had been supported by MSD in its Mana in Mahi programme.

The key learnings showed that targeted support achieved better outcomes and it was best to be community led. A holistic view was needed with long-term support to transition the rangatahi into adulthood. In the future, the Tūrangi Rangatahi Hub would look at continuing some of the work started by this project.

Members congratulated Ms Pohe for her hard work and looked forward to supporting this project again in the future.

### TCG202508/04 RESOLUTION

Moved: Cr Kevin Taylor

Seconded: Member Lauren Fletcher

That the Tūrangi Co-Governance Committee receives the information from Ms Gina Pohe regarding the Tūrangi Rangatahi in Mahi pilot.

**CARRIED**

*Note: All members present at the Tūrangi Co-Governance Committee meeting voted in favour of resolution TCG202508/04 above.*

### 5.4 CUSTOMER REQUEST FOR TREE REMOVAL ON PAKIRI STREET, TŪRANGI

The Parks Advisor Planning and Operations introduced herself and advised that she could answer questions regarding the report.

The following was clarified:

- The subject tree was not part of the completed kerb and channel project.
- Council's Tree and Vegetation Policy would be reviewed in 2026, and feedback was welcome from committee members.
- Severe hardship was usually on medical grounds. In the past, trees that were removed for this reason included relevant evidence that had been provided from a doctor. Debris was not considered severe hardship because trees were expected to drop leaves.
- Tall trees in Tūrangi were part of a programme of work and were crown lifted to provide clearance for fire engines and buses.
- No previous decisions had been carried to remove trees for views or falling debris because that was not in line with the Tree and Vegetation Policy.

Members were supportive of the Tree and Vegetation Policy being reviewed.

**TCG202508/05 RESOLUTION**

Moved: Poumatua Te Wharau Walker  
Seconded: Cr Sandra Greenslade

The Tūrangi Co-Governance Committee declines the customer request to remove the Red Oak (*Quercus rubra*) located on Paekiri Street in Tūrangi.

**CARRIED**

*Note: All members present at the Tūrangi Co-Governance Committee meeting except for Member Amanda Martin and Mayor David Trewavas voted in favour of resolution TCG202508/05 above. Member Amanda Martin and Mayor David Trewavas voted against resolution TCG202508/05.*

*Mayor David Trewavas left the meeting at this point (11.02am).  
Poumatua Te Wharau Walker resumed the Chair from item 5.5 onwards.*

**5.5 TŪRANGI RESERVES MANAGEMENT PLAN DRAFT VISION AND OBJECTIVES**

The Senior Policy Advisor summarised the report and added that she would come back to members at the following month's workshop with options for permitting or not permitting alcohol in the reserves. She clarified that the Reserves Management Plan was not for all reserves in Tūrangi, only those that were for community use. Utility reserves were not part of the management plan.

At the following month's meeting, members would be requested to approve the draft Reserves Management Plan for consultation with the community.

**TCG202508/06 RESOLUTION**

Moved: Member Amy Walker  
Seconded: Member Lauren Fletcher

That the Tūrangi Co-Governance Committee directs officers to continue drafting Tūrangi Reserves Management Plan based on the draft vision and objectives provided and subject to any further amendments from the Committee.

**CARRIED**

*Note: All members present at the Tūrangi Co-Governance Committee meeting voted in favour of resolution TCG202508/06 above.*

**5.6 OPERATIONS AND COMMUNITY ENGAGEMENT UPDATES FOR TŪRANGI**

The Southern Lake Taupō Engagement Partner updated the committee on the following:

**Incorporated Societies**

A free workshop hosted by Community Waikato was held recently in Taupō to educate people regarding upcoming changes to incorporated societies. Incorporated societies needed to re-register by 5 July 2026 or they would cease to operate, or become a Charitable Trust. The Southern Lake Taupō Engagement Partner had looked up Tūrangi incorporated societies and contacted them in advance of the workshop. She added that Community Waikato could host a Tūrangi workshop if enough people were interested and would take part.

**Taupō Disability Focus Group**

The Halberg Foundation had hosted disability awareness training on 29 July in Taupō. There had been a good turnout, including groups from Tūrangi.

**Boiling of Water**

A mailout had gone to residents in Kinloch, Omori, Hatepe, and Motuoapa regarding boiling water. This was commissioned by Taumata Arowai, the Water Services Authority who wanted to advise residents that

drinking water did not have the protozoa barrier in these areas.

#### **Tūrangi Men's Shed**

The old Tokaanu garage was to be used for the Men's shed and ITM Tūrangi was keen to support renovations by donating supplies, along with other local businesses and people in the community. The location had everything that the group needed, and they had organised a working bee for the next Saturday.

#### **Waikato Regional Council buses**

Over the next couple of months, engagement would be undertaken regarding changes to the Tūrangi Taupō connecting buses. There was demand for another service so Waikato Regional Council were looking at options and would work with Council to get feedback from the community.

#### **Iwiheke Place Speed Bumps**

The Transport team were working with the kura around placing speed bumps in this street to slow down traffic. Part of the process would involve getting feedback from residents of the street.

#### **Local Government Elections**

The Southern Lake Taupō Engagement Partner and other staff had been to the local kura and to New World to encourage people to enroll to vote. They had success with a 64 year old gentleman who had never enrolled or voted before but was concerned enough to want to do that now.

#### **Upcoming events**

- There was a public meeting to be held later that day at the Senior Citizen's Hall, hosted by Hon Matt Doocey, Associate Minister of Health. He was travelling around the country on a rural health roadshow.
- Representatives of the Bay Trust Community Funding would hold a hui on 19 August and had encouraged all groups wanting funding to meet and chat with them. There was no requirement to register in advance.

The Community Engagement and Development Manager talked through the remainder of items on the report.

#### **TCG202508/07 RESOLUTION**

Moved: Poumatua Te Wharau Walker

Seconded: Member Bernice Te Ahuru

That the Tūrangi Co-Governance Committee receives the updates on operations and community engagement in Tūrangi.

**CARRIED**

*Note: All members present at the Tūrangi Co-Governance Committee meeting voted in favour of resolution TCG202508/07 above.*

#### **5.7 MANA WHAKAHONO WORKPLAN UPDATE**

The Iwi Engagement Partner updated members on behalf of the Co-Governance Management Partner and added the following to the dashboard report attached to the agenda:

- Clause 13.4 Mana Whakahono review  
Another hui had been scheduled for 19 August regarding possible draft clauses to be added.
- Clause 31.3 Early engagement on three waters infrastructure projects  
Following the meeting on 23 July, feedback had been provided to Ngāti Tūrangitukua from the Three Waters Manager and would be followed up.
- Clause 45.3 Training and Capacity Building  
A meeting had been held on 1 August to discuss and plan for the year's summer interns.

## Tūrangi Co-Governance Committee Meeting Minutes

6 August 2025

- Mana Whakahono Master Spatial Plan  
A meeting had been held on 20 July to discuss the scope, the revised scope was with Ngāti Tūrangitukua awaiting feedback.
- Hirangi stream Maintenance  
Following the meeting held on 23 July, a site visit had been arranged with Waikato Regional Council on 20 August.

**TCG202508/08 RESOLUTION**

Moved: Member Lauren Fletcher

Seconded: Cr Kevin Taylor

That the Tūrangi Co-Governance Committee receives the Mana Whakahono workplan update (A3791614).

**CARRIED**

*Note: All members present at the Tūrangi Co-Governance Committee meeting voted in favour of resolution TCG202508/08 above.*

**5.8 MEMBERS' REPORTS**

The following members' reports were received:

Ms Amy Walker

- Was disappointed that not all Council members of the Tūrangi Co-Governance Committee had supported the Joint Management Agreement between Council and the Tūwharetoa Māori Trust Board (TMTB) which had been considered at the 31 July Council meeting. She felt these members had not used the opportunity to support the facts outlined by the Joint Committee members, the staff, and the legal advisors. Ngāti Tūrangitukua had provided a letter of support for the JMA to the Mayor and the Council members of the committee in advance of the 31 July Council meeting. Ngāti Tūrangitukua took the Mana Whakahono ā Rohe, and the partnership with Council seriously, and felt that those on the committee should do as well to uphold the relationship with respect, good faith, open communication and a commitment to partnership. She thanked the elected members of Council that had supported the JMA, as well as staff from both TMTB and Council that had worked hard to write it.

Cr Sandra Greenslade

- The new board members had been appointed to Destination Great Lake Taupō and would start in September 2025.
- Attended the Emergency Management Committee meeting on Monday 4 August. Hatepe and Tūrangi still needed to complete community response plans for emergencies. They were important as there were significant risks in this part of the district.
- Would attend the Unison Business Awards on Friday 8 August and was pleased that there were a number of Tūrangi businesses that were finalists.
- Would attend the Tūrangi Tongariro Grants Distribution Committee meeting that afternoon.
- Acknowledged the community members that had given her feedback on the Joint Management Agreement between Council and the Tūwharetoa Māori Trust Board.

Ms Amanda Martin

- Encouraged alternative communications to just Facebook as a lot of people did not use it.
- Encouraged venues and events to be more inclusive by holding alcohol free events so that those recovering from alcohol abuse felt comfortable attending.

## Tūrangi Co-Governance Committee Meeting Minutes

6 August 2025

Ms Lauren Fletcher

- Supported Ms Amy Walker's comments regarding the JMA decision and thanked staff members Sue Mavor, Co-Governance Management Partner and Nick Carroll, Policy Manager for their kōrero. She also thanked Topia Rameka who had spoken in favour of the JMA during Public Forum at the 31 July Council meeting when the JMA was considered.
- Thanked Bryce Green, District Venues Manager, and Te Mataapuna Sports Collective members Jeremy and Hayley who had cleaned and sorted the wharepaku at Te Mataapuna following a flood during the weekend junior rugby tournament.
- Tamariki had been selected for under 10s, 11s and 12s rugby teams and would be playing in tournaments coming up.
- Global Games for junior rugby was also coming up from 18 – 21 September at Owen Delany Park, Taupō.
- Te Kura o Hirangi's kapa haka team placed second and would attend the national competition next year.
- Te Kura o Hirangi recently had a pōhiri for its new teachers.
- Attended a Strengthening Capability and Capacity workshop with the Senior Community Development Advisor which was an eye opener and highlighted that there were not very many rangatahi in the volunteering space.
- Taiopenga, the Taupō kapa haka competition would be held from 9 – 12 September 2025.
- Hirangi marae had hosted a wānanga with Poipoia regarding Resource Management Act 1991 for taiao (environment) experts around New Zealand. Iwi in these spaces came together to understand the struggles and changing legislation, and how they could plan together going forward.

Cr Kevin Taylor

- Had met with the New Zealand Transport Agency regarding the speed limits on State Highway One at Motutere Reserve. It was likely that seasonal speed limits would be installed to restrict speed during long weekends and in the summer time.

**TCG202508/09 RESOLUTION**

Moved: Poumatua Te Wharau Walker

Seconded: Member Lauren Fletcher

That the Tūrangi Co-Governance Committee receives the reports from members.

**CARRIED**

*Note: All members present at the Tūrangi Co-Governance Committee meeting voted in favour of resolution TCG202508/09 above.*

**6 NGĀ KŌRERO TŪMATAITI | CONFIDENTIAL BUSINESS**

Nil

**The meeting closed at 11.49am with a karakia from all present.****The minutes of this meeting were confirmed at the Tūrangi Co-Governance Committee Meeting held on 3 September 2025.**.....  
**CHAIRPERSON**

Extracts from Standing Orders 2022-2025

## **15. Public Forums | Ngā Matapakinga a te Marea**

Public forums are a defined period of time, usually at the start of an ordinary meeting, which, at the discretion of a meeting, is put aside for the purpose of public input. Public forums are designed to enable members of the public to bring matters of their choice, not necessarily on the meeting's agenda, to the attention of the local authority.

In the case of a committee, subcommittee, local or community board, any issue, idea, or matter raised in a public forum, must fall within the terms of reference of that body.

### **15.1 Time limits | Ngā tepenga wā**

A period of up to 30 minutes, or such longer time as the meeting may determine, will be available for the public forum at each scheduled local authority meeting. Requests must be made to the chief executive (or their delegate) at least one clear day before the meeting; however this requirement may be waived by the chairperson. Requests should also outline the matters that will be addressed by the speaker(s).

Speakers can speak for up to 5 minutes. Where the number of speakers presenting in the public forum exceeds 6 in total, the chairperson has discretion to restrict the speaking time permitted for all presenters.

### **15.2 Restrictions | Ngā Herenga**

The chairperson has the discretion to decline to hear a speaker or to terminate a presentation at any time where:

- A speaker is repeating views presented by an earlier speaker at the same public forum;
- The speaker is criticising elected members and/or staff;
- The speaker is being repetitious, disrespectful or offensive;
- The speaker has previously spoken on the same issue;
- The matter is subject to legal proceedings; and
- The matter is subject to a hearing, including the hearing of submissions where the local authority or committee sits in a quasi-judicial capacity.

### **15.3 Questions at public forums | Ngā pātai i ngā matapakinga a te marea**

At the conclusion of the presentation, with the permission of the chairperson, elected members may ask questions of speakers. Questions are to be confined to obtaining information or clarification on matters raised by a speaker.

### **15.4 No resolutions | Kāore he tatūnga**

Following the public forum, no debate or decisions will be made at the meeting on issues raised during the forum unless related to items already on the agenda. (See the LGNZ Guide to Standing Orders for suggestions of good practice in dealing with issues raised during a forum).

### **15.5 Application of restrictions | Te hāngaitanga o ngā Herenga**

Clause 15.2 above applies to members of the public addressing meetings at any time, not just as part of a scheduled public forum session.

Extracts from Standing Orders 2022-2025**9.1 Items of business not on the agenda which cannot be delayed | Ngā take kāore i runga i te rārangi take e kore e taea te whakaroa**

A meeting may deal with an item of business that is not on the agenda where the meeting resolves to deal with that item and the chairperson provides the following information during the public part of the meeting:

- (a) The reason the item is not on the agenda; and
- (b) The reason why the discussion of the item cannot be delayed until a subsequent meeting.

*LGOIMA, s 46A(7).*

Items not on the agenda may be brought before the meeting through a report from either the chief executive or the chairperson.

**Please note**, that nothing in this standing order removes the requirement to meet the provisions of Part 6 of the LGA 2002 with regard to consultation and decision-making.

**9.2 Discussion of minor matters not on the agenda | Te kōrerorero i ngā take iti kāore i runga i te rārangi take**

A meeting may discuss an item that is not on the agenda only if it is a minor matter relating to the general business of the meeting and the chairperson explains at the beginning of the public part of the meeting that the item will be discussed. However, the meeting may not make a resolution, decision, or recommendation about the item, except to refer it to a subsequent meeting for further discussion.

*LGOIMA, s 46A(7A).*

Site plan of Tūrangi Craft Market







7 August 2025

Carol Harwood  
By email:

Dear Carol

**Licence of Tūrangi Pedestrian Mall for Tūrangi Craft Market**

I am writing about your request for a licence to use part of the Tūrangi pedestrian mall for the Tūrangi Craft Market.

Taupō District Council is willing to grant you, by licence, the right to use part of the mall as shown on the plan below for the craft market, and otherwise on the terms in the schedule below.

Please get your own legal advice about this arrangement, if you need to.

If you are happy to go ahead with this arrangement, please sign at the bottom of this page and return to me by email or post.

I look forward to hearing from you.

Yours faithfully

Karyn Hollman  
**Senior Solicitor - Roia Matua**

To: Taupō District Council  
Private Bag 2005, Taupō  
For:  
Email:

**Acceptance of licence to occupy**

I, Carol [any middle name/s] Harwood of [town], accept the above arrangement and agree to abide by its terms.

\_\_\_\_\_  
**Signature – Carol [any middle name/s] Harwood**

**Date:**

**Plan of site****Key terms**

<b>Start date:</b>	1 September 2025
<b>Land:</b>	Tūrangi pedestrian mall, being unformed legal road, as shaded yellow on the plan above.
<b>Site:</b>	Part of the land outlined in <b>red</b> on the plan above
<b>Your activity:</b>	Tūrangi Craft Market made up of approx. 6 stalls selling goods of which 80% is made by the stallholder or upcycled (and excludes second-hand goods).
<b>Term:</b>	3 years
<b>End date:</b>	31 August 2028
<b>Further terms:</b>	2 rights to a further 3 years each
<b>Last end date:</b>	31 August 2034 (assuming all further terms are granted)
<b>Fee:</b>	\$1.00 per annum subject to review
<b>Payment dates:</b>	<i>[in case fee reviewed upward]</i>
<b>Review dates:</b>	At the start of a further term
<b>Improvements:</b>	<i>[describe]</i>

<b>Consumables:</b>	Utilities (eg: power)
<b>Hours:</b>	8.30 am to 1.00pm each Saturday
<b>Public risk cover:</b>	[Required?]

Wherever key terms appear below, they mean the details corresponding to them in the schedule above.

**Right to occupy site**

**Right of first refusal**

- 2.1 If:
- (a) You have complied with these terms;
  - (b) You have notified us at least three months before the end date that you wish to continue occupying the site;
  - (c) We agree with you that your activity is proving beneficial to the Tūrangi community;
  - (d) We decide that the site is available for re-licencing to you,
- then we will notify you the terms on which you may continue to occupy the site from the end date to the last end date.
- 2.2 You will have 10 working days to tell us whether you are happy with our proposed terms.
- 2.3 If you are happy with our terms, then on you confirming that, each of us will be committed to those terms for the period from midnight on the end date to midnight on the last end date.
- 2.4 If:
- (a) you do not reply to within the 10-working day period; or
  - (b) you tell us that you do not accept the terms or you do not wish to continue to occupy the site;
- then your right to occupy the site will end on the end date, and we may allow another person to use the site for any purpose and on any terms that we think fit.

**2. Outgoings**

You do not need to pay any outgoings, apart from consumables, in relation to your use of the site for your activity.

**3. Licence rights**

Your right to occupy the site is subject to you complying with your obligations under this licence.

**4. Use of site**

- 4.1 You may use the site for your activity only.

- 4.2 During the hours, you must keep and maintain the site in good order, tidy and safe condition.
- 4.3 You must ensure your activity operates in a safe and orderly manner and does not annoy or disturb anyone else in the vicinity of the site.
5. **Use of Ancestral Name** [*per Takinga New – see minutes of TCGC of 6 Dec 2023*]
- To the extent the ancestral name of Tūrangi, or any other ancestral name, is part of the name of your activity:
- (a) you acknowledge that your use of such name is a privilege.
- (b) You must not use any ancestral name in connection with anything that is not directly related to your activity.
6. **Health and Safety**
- 6.1 We both have legal duties relating to the health and safety of people within, or in the vicinity of, the site.
- 6.2 Each of us must ensure, so far as is reasonably practicable, that the health and safety of people is not at risk from activities within the site.
- 8.3 Without limiting clause 8.1 or 8.2:
- (a) We both must actively consult, cooperate and coordinate activities with each other to ensure the health and safety of people within, or in the vicinity of, the site; and
- (b) if the law requires us to have protocols, we must provide you a copy of those protocols, and you must comply with them. The protocols must not unreasonably interfere with your rights and must not be changed without you being told.
7. **Limitation of liability**
- Unless we are negligent or guilty of deliberate misconduct, we are not liable for any loss or damage caused by your activity.
8. **Insurance**
- You are responsible for insuring your property within the site.
9. **Legal compliance**
- 9.1 You must comply with any rules, imposed by the government or any authority, that apply to your activity or the site.
- 9.2 You must comply with our reasonable directions and requirements relating to your activity and the land.
10. **Suitability of site**
- 12.1 We do not promise that the site is suitable or adequate for your purposes, and you have not relied on any statement by us to that effect.

12.2 You use the site at your own risk.

**11. Alterations and Additions**

You must not alter the surface of the site without our prior approval.

**12. Indemnity**

You must indemnify us against any legal action, liability or costs that we incur because of anything that happens from your activity operating within the site.

**13. End of Licence**

13.1 We may end this licence if you do not comply with the terms of this licence, and you fail to correct the default within 10 working days.

13.2 If we end this licence under clause 15.1 you must compensate us for any costs or loss that we suffer because of that.

**14. Condition of site at end of licence**

14.1 When this licence ends, you must leave the site in the same condition as you found it. If you don't, we may do whatever is needed to reinstate the site as it was and recover from you the costs of doing so.

16.2 We may recover what is owing by you to us by selling any property you leave behind.

**15. Signage**

You must not put up any sign within the site without our prior approval.

**16. Nature of rights**

Your rights under this licence are personal to you and cannot be transferred to anyone else.

**17. Costs**

You must pay on demand all reasonable costs (including legal costs), charges and other expenses that we incur or for which we become liable in connection with any breach by you of this licence.

**18. No waiver**

If we do not do anything in response to you not complying with these terms does not mean we cannot do so later.

**19. Notices**

Any notice given under this licence must be posted or emailed to the last known address of the other of us.

20. **No limitation of statutory powers**

Nothing in this licence limits our statutory rights.

21. **Dispute resolution**

If we cannot between us resolve any dispute about this licence within a reasonable time, then we may escalate the matter to our Chief Executive.

22. **Definitions**

**You** refers to Carol [any middle name/s] Harwood and includes people under her control (eg: stallholders).

**We** or **us** means Taupō District Council and includes its officers and staff.

DRAFT

Hazard	Risk	People at Risk	Existing Controls	Risk Level	Further Action Required
Trip hazards (e.g. cables, uneven ground)	Slips, trips, and falls	Stallholders, visitors	Cables taped down, signage for uneven surfaces, regular inspections	Medium	Raise via Service requests any concerns around slippery ground, lifted concrete areas etc for TDC to follow through.
Weather conditions (rain, wind, sun)	Exposure, heatstroke, dehydration, wind damage	Everyone	Tents securely fastened, sunscreen available, water stations	Medium	Monitor weather forecast, emergency shelter plan
Manual handling (e.g. setting up stalls)	Strains, sprains, back injuries	Stallholders, volunteers	Manual handling training, trolleys available, vehicle manoeuvring	Medium	Encourage team lifting, support each other, ensuring usage of pilot person for vehicle manoeuvring prior to and after the market
Food safety	Food poisoning, allergic reactions	Visitors	Food licenses, hygiene standards, allergen labeling	Medium	Regular inspections, training for food handlers



**Figure 1 Relative locations of land affected by 33kV cable**



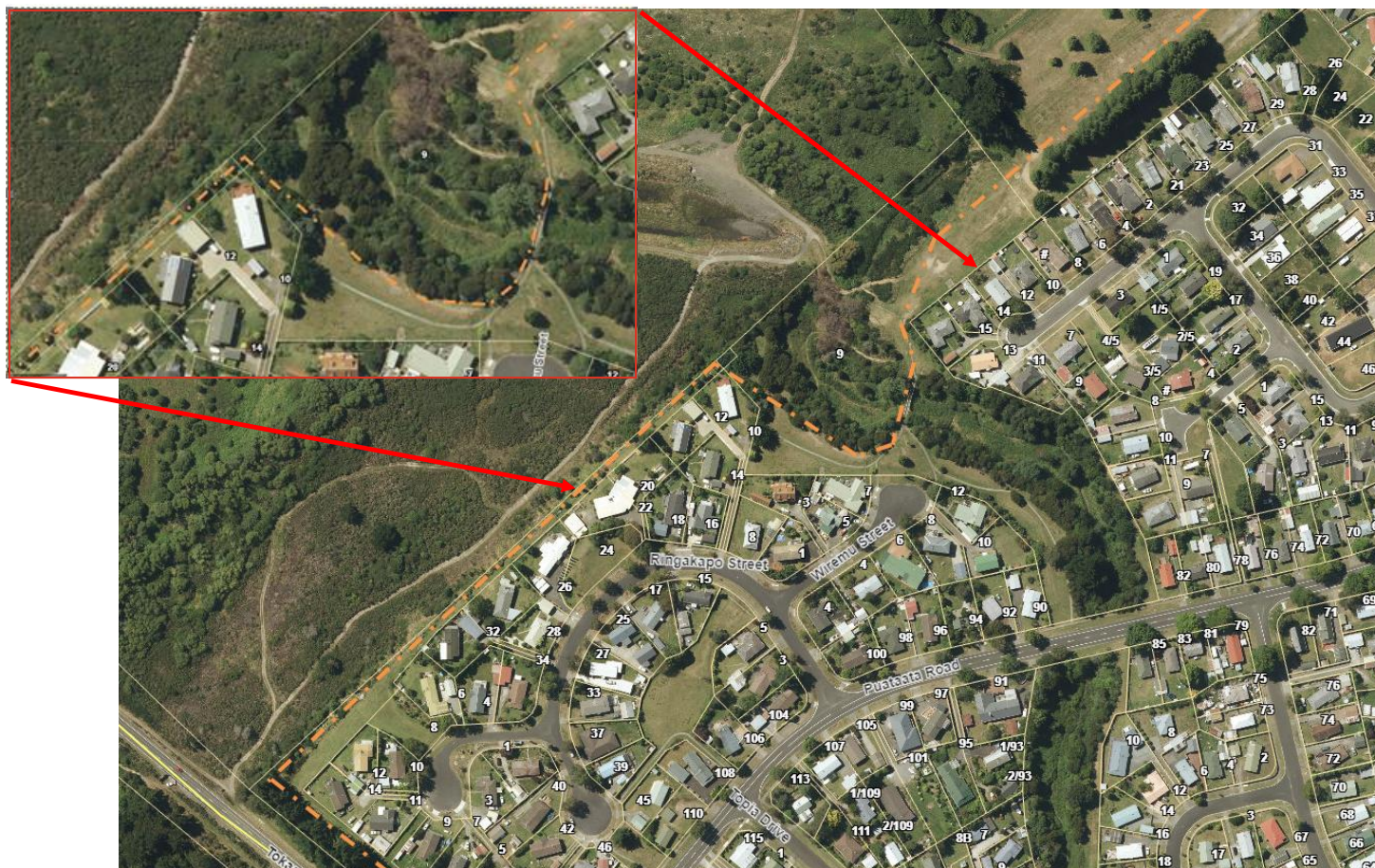
## Revised 33kV cable route proposed [24 August 2025]

**Total route overview-** Cable route follows existing water and wastewater pipes.





**Pedestrian Bridge and Reserve Ally Ringakapo Street [revised]**



**5.3 REQUEST FOR EASEMENT TO THE LINES COMPANY LIMITED FOR 33KV POWER CABLE**

**Author:** Karyn Hollman, Senior Solicitor

**Authorised by:** Nigel McAdie, Legal and Governance Manager

**TE PŪTAKE | PURPOSE**

The purpose of this report is to consider the request for a new electricity easement to The Lines Company Limited (TLC) over land subject to Part D of the Mana Whakahono ā Rohe.

**WHAKARĀPOPOTOTANGA MATUA | EXECUTIVE SUMMARY**

TLC requests an easement in respect of a 33kV power cable being installed within Tūrangi to provide a backup power to the local community.

The Committee is required to consider, first, whether to grant the easement; and second, whether to approve the easement on behalf of the Minister of Conservation under section 48(1) of the Reserves Act 1977.

**NGĀ TŪTOHUNGA | RECOMMENDATION(S)**

That the Tūrangi Co-Governance Committee:

1. agrees to grant a right to convey electricity easement in gross to The Lines Company Limited over:
  - a. part Lot 1 DP 28845 (Title 148633) being part of the Tūrangitukua Park;
  - b. part Lot 67 DP 50585 (Title 148632);
  - c. part Lot 4 DP 50584, and part Lots 71 and 72 DP 50583 (Title WN52D/938).
2. authorises the Chief Executive to negotiate the terms of the electricity easement;
3. approves the grant of an electricity easement to The Lines Company Limited over part Lot 4 DP 50584, and part Lots 71 and 72 DP 50583 (Title WN52D/938), being local purpose (utility) reserve, on behalf of the Minister of Conservation under s48(1) of the Reserves Act 1977; and
4. authorises the Chief Executive and the Mayor to do and sign what is needed to enable the electricity easement to be registered at Land Information New Zealand at the cost of The Lines Company Limited.

**TE WHAKAMAHUKI | BACKGROUND**

The proposal has not been presented previously.

**NGĀ KŌRERORERO | DISCUSSION**

The proposed power cable will provide a backup power supply that is available during periods of repair and maintenance of the primary supply. Without the backup supply, the community will suffer a power outage or disruption during these times.

The route of the cable is shown by a dot-dash orange line on the maps **attached**. The proposed cable is to go under seven land parcels. Two of the seven parcels are road, in respect of which no further action is required: the necessary legal rights are afforded to all utility operators by the National Code of Practice mandated under the Utilities Access Act 2010. The other five parcels are listed in Schedule 5 to the Mana Whakahono, in respect of which TLC seeks a right to convey electricity easement.

The proposal is to drill the cable in the ground to minimise the impact to the land surface. Some open excavation is needed but this will be kept to a minimum.

The cable is to lie within an existing corridor that already accommodates water and wastewater pipes. The corridor includes a section under an existing pedestrian bridge over land owned by the Ngāti Tūrangitukau Charitable Trust, and a section within local purpose (utility) reserve.

## Tūrangi Co-Governance Committee Meeting Agenda

09 July 2025

The Committee is required to consider, first, whether to grant the easement; and second, whether to approve the easement on behalf of the Minister of Conservation under section 48(1) of the Reserves Act 1977.

For the reasons given below, we do not believe public notice of the proposed easement is required, pursuant to s48(3) of the Reserves Act.

Accordingly, there are two options:

- 1: Do not approve easements to TLC in respect of a 33kV power cable.
- 2: Approve easements to TLC in respect of a 33kV power cable.

**NGĀ KŌWHIRINGA | OPTIONS**Analysis of Options**Option 1: Do not approve easements to TLC in respect of a 33kV power cable.**

Advantages	Disadvantages
<ul style="list-style-type: none"> <li>This is no need for drilling under the land, or (limited) open excavation of the land.</li> </ul>	<ul style="list-style-type: none"> <li>TLC will need to re-design or not proceed with the second power supply regardless that Ngāti Tūrangitukua has already approved the proposal.</li> <li>Without the proposed power cable, there will be power shortages or outages during periods of repair or maintenance of the primary power source, with adverse impact on the local economy and community.</li> </ul>

**Option 2: Approve easements to TLC in respect of a 33kV power cable.**

Advantages	Disadvantages
<ul style="list-style-type: none"> <li>The cable is legally compliant, so TLC can proceed with its installation immediately the area is surveyed for easement purposes.</li> <li>The cable ensures that the local power demand can be met without disruptions or shortages.</li> </ul>	<ul style="list-style-type: none"> <li>Some limited open excavation to the land is required.</li> </ul>

**Analysis Conclusion:**

The preferred option is **Option 2: Approve easements to TLC in respect of a 33kV power cable.**

**NGĀ HĪRAUNGA | CONSIDERATIONS****Ngā Aronga Pūtea | Financial Considerations**

The financial impact of this proposal is nil. No consideration is payable by TLC for the easement grant, and TLC is expected to meet the costs to register the easement and maintain its infrastructure.

Long-term Plan/Annual Plan

There is no expenditure to be budgeted for in relation to the proposed easements and/or licences.

**Ngā Aronga Ture | Legal Considerations**Local Government Act 2002

The matter comes within scope of the Council's lawful powers, including satisfying the purpose statement of [Section 10](#) of the Local Government Act 2002, which says that the purpose of local government is (a) to enable democratic local decision-making and action by, and on behalf of, communities; and (b) to promote

## Tūrangi Co-Governance Committee Meeting Agenda

09 July 2025

the social, economic, environmental, and cultural wellbeing of communities in the present and for the future. We consider that social and economic wellbeing are relevant to this proposal, as the proposal relates to the reliable delivery of an essential utility to the community.

Section 48(1) Reserves Act 1977 and Part D Mana Whakahono ā rohe

The Committee is required to decide a. whether to grant the easement; and b. whether to consent on behalf of the Minister of Conservation to the easement over the local purpose (utility) reserve parcel.

The proposed easement involves two land parcels owned by the Ngāti Tūrāngitukua Charitable Trust. In this respect the Committee is to seek and adopt the recommendation of the Ngāti Tūrāngitukua members, unless there is a legal or other significant impediment to the Committee doing so.

The Ngāti Tūrāngitukua Charitable Trust has by email approved TLC's proposal.

The utility reserve, and the public rights in respect of it, will not be materially affected or permanently damaged by the installation of the underground cable, given the purpose of the reserve is for utilities, which already accommodates underground water and wastewater pipes. TLC will be responsible to reinstate the surface of the land (if needed) following installation of the cable. Accordingly, public notice of the proposed easement is not required pursuant to section 48(3) of the Reserves Act 1977.

No further authorisations are required.

Electricity Act 1992 / Electricity (Safety) Regulations 2010

On installation, the cable will comply with legal requirements, and the Electricity Engineers' Association's recommended best practice for security of supply, and TLC's own Security of Supply Policy.

**Ngā Hiraunga Kaupapa Here | Policy Implications**

There are no known policy implications. The current Tūrangi reserves management plan process does not affect the current proposal.

**Te Kōrero tahi ki te Ngāti Tūrāngitukua | Engagement with Ngāti Tūrāngitukua**

Taupō District Council is committed to meeting its statutory Tiriti O Waitangi obligations and acknowledges partnership as the basis of Te Tiriti. Council has a responsibility to act reasonably and in good faith to reflect the partnership relationship, and to give effect to the principles of Te Tiriti. These principles include but are not limited to the protection of rights of Ngāti Tūrāngitukua, enabling Ngāti Tūrāngitukua's participation in Council processes, and having rangatiratanga over tāonga.

Our statutory obligations outline our duties to engage with Ngāti Tūrāngitukua and enable participation in Council processes. Alongside this, we recognise the need to work side by side with the ahi kaa / resident iwi of our district. Engagement may not always be required by law, however meaningful engagement with Ngāti Tūrāngitukua allows Council to demonstrate good faith and our commitment to working together as partners across our district.

TLC has engaged directly with the Ngāti Tūrāngitukua Charitable Trust about this easement proposal.

**Ngā Tūraru | Risks**

There are no known risks. Investigations of the pedestrian bridge indicate it can handle the additional loading created by the installation of the proposed cable.

**TE HIRANGA O TE WHAKATAU, TE TONO RĀNEI | SIGNIFICANCE OF THE DECISION OR PROPOSAL**

Council's Significance and Engagement Policy identifies matters to be considered when assessing the degree of significance of proposals and decisions.

Officers have undertaken an assessment of the matters in the [Significance and Engagement Policy \(2022\)](#), and are of the opinion that the proposal under consideration is of a low degree of significance.

## Tūrangi Co-Governance Committee Meeting Agenda

09 July 2025

---

**TE KŌRERO TAHI | ENGAGEMENT**

Taking into consideration the above assessment, that the decision is of a low degree of significance, officers are of the opinion that no further engagement is required prior to the Committee's decision.

**TE WHAKAWHITI KŌRERO PĀPAHO | COMMUNICATION/MEDIA**

No communication/media required.

**WHAKAKAPINGA | CONCLUSION**

It is recommended that the Committee approve the grant of an electricity easement to The Lines Company Limited to enable the installation of a 33kV cable that will provide a backup power supply to the Tūrangi community, and to grant Ministerial consent to such easement under section 48(1) of the Reserves Act 1977.

**NGĀ TĀPIRIHANGA | ATTACHMENTS**

1. Proposed 33kV Cable Route - The Lines Company Limited



## Revised 33kV cable route proposed

**Total route overview-** Cable route follows existing water and wastewater pipes.





Map Breakdown – Hirangi Road and Tūrangitukua Park Section





### Tūrangitukua Park Extension





**Pedestrian Bridge and Reserve Ally Ringakapo Street**





**Puataata and Atirau Road section** (Atirau Road section previously approved)



**5.3 REQUEST FOR EASEMENT TO THE LINES COMPANY LIMITED FOR 33KV POWER CABLE**

The Parks and Reserves Manager advised that he was presenting this item on behalf of the Senior Solicitor who was not able to attend the hui.

In answer to a question, it was confirmed that location of pipes was taken into account when the pipes were due for renewal. A member requested that the power cable be relocated to the other side of Hirangi Road (compared to what was presented in the report).

The Parks and Reserves Manager asked that the item be deferred while he checked if this was possible.

*The Chair moved to item 5.4 and returned to this item after item 5.5.*

The Parks and Reserves Manager advised that he had spoken with the Lines Company and shared the map showing that the power cable could be placed on the other side of Hirangi Road (A3789244). He clarified that this was still contained in the legal description of the land.

**TCG202507/04 RESOLUTION**

Moved: Member Amy Walker  
Seconded: Cr Sandra Greenslade

**NGĀ TŪTOHUNGA | RECOMMENDATION(S)**

That the Tūrangi Co-Governance Committee:

1. agrees to grant a right to convey electricity easement in gross to The Lines Company Limited over:
  - a. part Lot 1 DP 28845 (Title 148633) being part of the Tūrangitukua Park;
  - b. part Lot 67 DP 50585 (Title 148632);
  - c. part Lot 4 DP 50584, and part Lots 71 and 72 DP 50583 (Title WN52D/938).
2. authorises the Chief Executive to negotiate the terms of the electricity easement;
3. approves the grant of an electricity easement to The Lines Company Limited over part Lot 4 DP 50584, and part Lots 71 and 72 DP 50583 (Title WN52D/938), being local purpose (utility) reserve, on behalf of the Minister of Conservation under s48(1) of the Reserves Act 1977; and
4. authorises the Chief Executive and the Mayor to do and sign what is needed to enable the electricity easement to be registered at Land Information New Zealand at the cost of The Lines Company Limited.

**CARRIED**

*Note: All members present at the Tūrangi Co-Governance Committee meeting voted in favour of resolution TCG202507/04 above.*



# **DRAFT TŪRANGI RESERVES MANAGEMENT PLAN**

## **2025**

DRAFT



## CONTENTS

VISION .....	6
OBJECTIVES .....	6
OUTCOMES .....	7
ACTIONS .....	8
Ngāti Tūrangitukua Values .....	8
Natural Environment Values .....	9
Recreation Values .....	10
Public Access and Safety .....	11
Built Structures and Infrastructure .....	12
Events, Leases, Licences and Uses .....	14
Reserve Specific Actions .....	16
Maps .....	19
Glossary .....	26



About this Reserve Management Plan

This management plan acknowledges and celebrates Ngāti Tūrangitukua [hapū](#) as the [mana whenua](#) and [kaitiaki](#) of Tūrangi and the reserves under this management plan.

This reserves management plan is for the community reserves in the Tūrangi township. The plan works in with other relevant statutory Council plans, strategies and bylaws, in particular the Taupō District Plan, Waikato Regional Plan, and reserve bylaws.

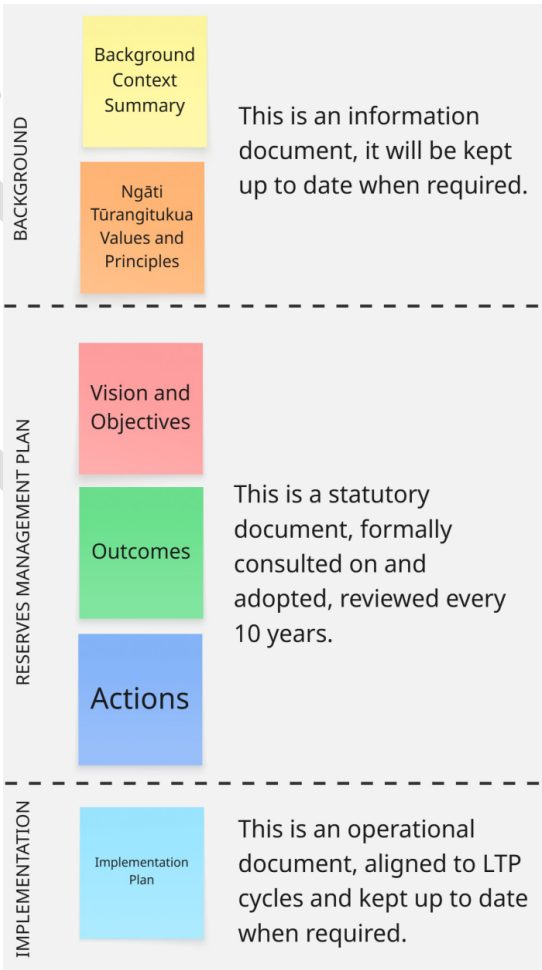
This plan is to be read in conjunction with the “Tūrangi Reserves Management Plan Context Summary Document 2025”, which sets out an overview of Ngāti Tūrangitukua values, principles, the history of the reserves and Tūrangi township, overview of community engagement and key issues and opportunities.

Within this reserves management plan are the key topics that were identified through early engagement. Each topic has an objective, desired outcomes, and a set of actions to implement the objectives and achieve the outcomes. The actions are subject to Council’s Long-term Plan process.

An implementation plan will be developed supplementary to this reserves management plan to determine the timing, priorities and those tasked with each action. It will be aligned with Council’s Long-term Plan cycle and will be kept up to date when required.

The actions listed in this document are not the only way to implement the objectives and achieve the outcomes. Other actions may be undertaken that achieve the vision, objectives and outcomes. Additional actions that meet the vision and objectives may be added to the implementation plan and tested through the Long-term Plan process.

This reserves management plan will be reviewed every 10 years. Any changes to terms and references or links to websites will be kept up to date within this document as required.





The management plan specifically relates to the reserves highlighted within the maps in section 8 and schedule as follows:

Reserve name	Purpose
A Reserve	Recreation Reserve
B Reserve	Local Purpose Reserve (Drainage)
C Reserve	Local Purpose Reserve (Drainage)
D Reserve	Recreation Reserve
E Reserve	Recreation Reserve
Fire Break Reserve	Recreation Reserve
Part Tūrangi Park Reserve	Recreation Reserve
Taupahi Reserve	Recreation Reserve
Te Kapua Park Reserve	Recreation Reserve
Te Kapua Park Reserve (Senior Citizen's Hall)	Local purpose reserve (Community buildings)
Te Koko Reserve	Recreation Reserve
Te Rangikahekeiwaho Reserve and Tūrangi Bowling Club	Recreation Reserve
Tūrangi Connector Reserves	Local Purpose Utility
Tūrangi Golf Club Reserve	Recreation Reserve
Tūrangi Squash Club Reserve	Recreation Reserve





Reserve name	Purpose
Tūrangitukua Sports Park Reserve	Recreation Reserve
Waipapa Reserve	Recreation Reserve
Water Supply Reserve	Local Purpose Reserve (Waterworks)



## VISION

**Tūrangi reserves are where Ngāti Tūrangitukua values stand tall and where the reserves' values are respected and enjoyed by the Tūrangi community and visitors.**

Vision and  
Objectives

## OBJECTIVES

- 1** Ngāti Tūrangitukua values and principles are honoured in the management of Tūrangi Reserves.
- 2** Tūrangi reserves provide for environmental well-being and open space.
- 3** The recreation values of the Tūrangi community are provided for in recreation reserves and are respected and enjoyed by all.
- 4** Publicly accessible Tūrangi reserves feel safe and provide connectivity across Tūrangi.
- 5** Built structures within Tūrangi reserves are designed to protect and enhance the reserves' values and primary purpose.
- 6** Events, leases, licences, and uses within Tūrangi reserves are appropriate for their cultural, natural and recreation values.

## OUTCOMES

### Outcomes

#### Tūrangitukua Values

- 1.1 Ngāti Tūrangitukua values are applied to the management of Tūrangi Reserves.
- 1.2 Ngāti Tūrangitukua cultural principles are enhanced in Tūrangi reserves.
- 1.3 Sites of significance are protected and managed as deemed appropriate by Ngāti Tūrangitukua.
- 1.4 Tūrangi Reserves are correctly named as deemed appropriate by Ngāti Tūrangitukua.

#### Natural Environment Values

- 2.1 Tūrangi reserves have an open space character.
- 2.2 Ecological values and riparian areas are protected and restored where practicable.
- 2.3 The mauri of the environment of Tūrangi reserves is enhanced.
- 2.4 Community partnerships with aligned ecological enhancement groups are utilised and fostered.

#### Recreation Values

- 3.1 Recreation uses predominate in Tūrangi recreation reserves.
- 3.2 Recreation play equipment is rationalised in key reserves.
- 3.3 Tūrangi reserves provide for responsible animal management appropriate to the level of recreation use.

#### Public Access and Safety

- 4.1 Tūrangi reserves are accessible (where public access is available).
- 4.2 Tūrangi reserves are maintained to improve recreation safety and enjoyment.
- 4.3 Adequate and appropriate vehicle access and parking is maintained and managed to service Tūrangi reserves.

#### Built Structures and Infrastructure

- 5.1 Built structures and infrastructure within Tūrangi Reserves are:
  - consistent with the primary purpose of the reserve.
  - rationalised to maximise open space.
  - designed to protect cultural, natural, and recreation values and open space character.
  - to prevent encroachments and minimise vandalism.

#### Events, Leases, Licences, Uses

- 6.1 Events, leases, licences, and specific uses are provided for where they meet the reserves' purpose, values, and community outcomes.
- 6.2 The approval process for events, leases, licences and uses of Tūrangi reserves is undertaken in accordance with the [Mana Whakahono-ā-Rohe](#) agreement between Ngāti Tūrangitukua and Taupō District Council.
- 6.3 Council's relevant policies on events, leases, licences, and reserve uses are followed.



## Actions

### ACTIONS

#### Ngāti Tūrangitukua Values

##### Ngāti Tūrangitukua Values in the reserves' management

- 1.1.1 Continue to honour and undertake the actions in [the Mana Whakahono ā Rohe](#) agreement between Ngāti Tūrangitukua and Taupō District Council.
- 1.1.2 Apply the nurturing care and protection values of Pihanga, emphasising decision-making based on [aroha](#) and [manaakitanga](#) to ensure the well-being of the [Te Taiao](#) and the Tūrangi community.
- 1.1.3 Look to local [pūrākau](#) to gather, support and uplift Tūrangitukua culture, heritage, and collective aspirations in the management of Tūrangi reserves.
- 1.1.4 When developing reserves; seek opportunities that enhance and restore the natural environment and health of Tūrangi reserves.
- 1.1.5 Protect sites of significance and support Ngāti Tūrangitukua to exercise their rights over their whenua consistent with relevant legislation and agreements.

##### Enhancing Ngāti Tūrangitukua Principles

- 1.2.1 Where deemed appropriate by hapū, and subject to Long-Term Plan funding; facilitate and support the installation of appropriate [mahi toi](#) within the reserves to reflect Ngāti Tūrangitukua cultural values.
- 1.2.2 Partner with hapū to enhance [mana](#) and [ahi kā](#) by establishing appropriate cultural narrative within Tūrangitukua reserves, for example (but not limited to) story boards, QR codes, and signage in te reo Māori as deemed appropriate by mana whenua.



- 1.2.3 Provide for cultural traditions as appropriate for the reserve purpose, e.g. [pā harakeke](#) harvesting and areas for [raranga](#).
- 1.2.4 Develop a visitor information pamphlet for the Tūrangi Reserves that highlights the reserves' vision, objectives and information on the ownership of Ngāti Tūrangitukua. Make available at the Tūrangi Customer and Visitor Information Centre and online.

##### Sites of Ngāti Tūrangitukua Cultural Significance

- 1.3.1 Restrict public access within Tūrangi reserves with wāhi tapu, as deemed appropriate by Ngāti Tūrangitukua. Taupō District Council to update and provide appropriate access signage within the reserves. See also specific Tūrangi reserves with public access restrictions identified in section 7 of this management plan.
- 1.3.2 If during reserve development an archaeological site or feature is discovered, all work must cease immediately, and the Council, [tangata whenua](#) and any other appropriate agencies such as the Heritage New Zealand are notified immediately. Follow the usual legal process.
- 1.3.3 Sites of cultural significance are recorded and shared within Council's internal database and GIS, ensuring sensitive information is protected and considered in Council's works programmes and resource consent applications.

##### Reserve Whakapapa and Naming

- 1.4.1 Ngāti Tūrangitukua to lead naming process of reserves that require appropriate names. See specific Tūrangi reserves in section 7.
- 1.4.2 Council will support hapū approved corrections to names of reserves through appropriate signage, name changes, and information within the reserves.

## Natural Environment Values

### Actions

#### Open Space Character

- 2.1.1 Maintain a low level of built structures and features within recreation reserves.
- 2.1.2 Minimise the visual effect of solid continuous external walls on buildings to avoid large built areas that have the potential to dominate an open space.
  - ☐ Examples of minimising the visual effect include planting, textural, material and colour variation, mural paintings that highlight the natural environment and / or cultural values of the reserves.

#### Ecological Values

- 2.2.1 Ecological areas are protected and enhanced through appropriate management, where they meet the criteria for significance.  
 Appropriate management may include on-going plant and animal pest management, planting consistent with the ecological report by Singers Ecological Ltd, April 2025, and restricting access.
- 2.2.2 When considering development of reserves; identify ecological enhancement opportunities within reserves where practicable such as; daylighting underground channelled streams, planting poorly draining areas, restoration planting surrounding streams, native plant arboretum.
- 2.2.3 New ecological plantings within reserves to consider Crime Prevention Through Environmental Design (CPTED) techniques – for instance, provide appropriate setbacks of vegetation from walking areas, and maintain good visibility and sight lines.
- 2.2.4 Undertake revegetation, pest management and partnerships in accordance with Council and Regional Council guidance, including; Taupō Tree and Vegetation Policy, Waikato Regional



Council Pest Management Plan and Taupō District Council Revegetation Guide.

- 2.2.5 Within appropriate reserves; provide information on the local ecology including flora and fauna of interest, and how looking after the land looks after the streams and Lake Taupō [moana taonga](#).

#### Environmental Health

- 2.3.1 Provide for rubbish bins and toilet facilities at well used reserves with supporting bilingual co-branded management signage.
- 2.3.2 Explore educational opportunities to reduce public fly-tipping and garden waste dumping onto reserves, in partnership with community environmental groups.
- 2.3.3 Where hard surfaces are required within reserves; ensure appropriate drainage is maintained and incorporate low-impact urban design techniques to manage storm water effectively.
- 2.3.4 Use natural stormwater filtering techniques where practicable, such as rain gardens or planted swales.

#### Community Environmental Partnerships

- 2.4.1 Partner with local community groups, school groups, and the local plant nursery for ecological restoration, ongoing maintenance, and pest management. Consider an “Adopt a Plot” scheme.
- 2.4.2 Investigate funding options for ecological restoration through grant schemes, e.g., the Waikato Regional Council [Funding and Scholarships](#)

## Recreation Values

### Appropriate Recreation Uses

- 3.1.1 Recreation uses are given priority over non-recreation uses in recreation reserves.
- 3.1.2 Recreation uses include (but not limited to) play equipment, exercise equipment, walking and cycling paths, bike pump tracks, dog exercise areas, facilities for games, picnicking, and other outdoor activities.
- 3.1.3 Non-recreation uses include infrastructure, network utility services, and telecommunications (see provisions on Built Structures section 5).
- 3.1.4 Refer to [Council's bylaws](#) for restrictions, including the use of motorised vehicles, trail bikes, motor bikes, horses, camping, drones, nuisance behaviour, taking psychoactive substances, fireworks, lighting fires, posting bills or posters.
- 3.1.5 Refer to Council's [Venue Booking Policy](#) for appropriate uses of Taupō District Council venues and conditions of hire.
- 3.1.6 Refer to [council's rules, regulations and licenses](#) for provisions relating to licensing of alcohol, animals, building and renovations, bylaws, drones, food licensing, noise control, resource consents, signs.
- 3.1.7 At each review period of this reserves management plan, obtain updated Police reports on complaints and incidences relating to the reserves to assist in reviewing provisions on uses of reserves.
- 3.1.8 Refer to section 7 for reserve specific provisions.

### Rationalisation of Equipment, Facilities and Venues

- 3.2.1 Continue to rationalise play and recreation equipment into a central destination playground (Te Kapua Park [papa tākaro](#)) and

## Actions

limit play equipment in surrounding reserves to existing satellite playgrounds.

- 3.2.2 Investigate the feasibility of developing a centralised hub or building that caters for a variety of uses through the Tūrangi Masterplan project. Rationalise recreation and community facilities such as netball, basketball, and tennis courts.
- 3.2.3 Community groups or individuals seeking funding options for recreation equipment and reserve uses refer to Council's website outlining [Funds Available](#).

### Animal Management

- 3.3.1 Dog management is in accordance with the Council [Control of Dogs Bylaw](#), [Reserves Bylaw](#) and reserve specific provisions of this management plan. Ensure dogs are on a lead at all times within reserves. The exception is designated [Dog Exercise Areas](#).
- 3.3.2 Dogs are not permitted on sports grounds, playgrounds, or within significant ecological areas on Tūrangi reserves (also referred to as SNAs).



## Public Access and Safety

### Actions

#### Access and Connectivity

- 4.1.1 Maintain access to and within the Tūrangi reserves where appropriate and practicable. Ensure all walkways and cycle routes are well maintained to allow easy access and use.
- 4.1.2 Apply for Long-term Plan funding to upgrade vehicle restriction barriers within reserves to protect walkways and reserves from motorised bikes and vehicles (refer to specific provisions for Connector Reserves in section 7).
- 4.1.3 Ensure funding is available for on-going maintenance and to immediately repair damaged or vandalised vehicle barriers.

#### Safety

- 4.2.1 Use Crime Prevention through Environmental Design (CPTED) principles when planning reserve development and vegetation planting. Maintaining clear sightlines by trimming vegetation and placing amenities in visible areas (see also Environmental Values section 2).
- 4.2.2 Investigate where additional lighting in reserves may be recommended (see also provisions for Connector Reserves section 7).
- 4.2.3 Continue to ensure play and recreational equipment meets current safety standards.

#### Vehicle access & parking

- 4.3.1 Ensure car parking areas are defined and clearly marked to prevent informal parking on grass or restricted areas in reserves.
- 4.3.2 Include speed management measures in car parks including (but not limited to) signage, speed bumps, and variable car park surfaces.

- 4.3.3 Continue education in partnership with local schools, [rangatahi](#) hub, and law enforcement on looking after and maintaining reserves for safety and public enjoyment.



## Actions



### Built Structures and Infrastructure

#### Appropriate Structures for the Purpose of Reserve

- 5.1.1 Ensure new built structures on reserves are necessary to meet the primary purpose of those reserves, considering (but not limited to) the relevant provisions of the [Mana Whakahono-ā-Rohe](#) agreement, [Taupō District Plan](#), [Waikato Regional Plan](#), [Ngāti Tūrangitukua Claims Settlement Act 1999](#), [Reserves Act 1977](#), [Building Act 2004](#), [Code of Practice](#).
- 5.1.2 The primary purpose of each Tūrangi Reserve is provided in the Scope section of this management plan.
- 5.1.3 For the purpose of this reserves management plan, built structures on reserves include (but not limited to) buildings, sculptures, walls, fences, screens, bollards, entry markers, [waharoa](#), posts, play equipment, signage.
- 5.1.4 Avoid locating new above-ground infrastructure on Tūrangi recreation reserves unless there is no viable alternative.
- For the purpose of this reserves management plan, above ground infrastructure includes (but not limited to) network utilities, communications and power transmission, transformers, treatment plants, pump stations.
- 5.1.6. If there is no practicable alternative location for above-ground infrastructure; ensure it is designed and located to avoid adverse impact on recreation values.

#### Design of Built Structures

- 5.2.1 In addition to the provisions of the Taupō District Plan, use colours and materials on built structures and infrastructure that integrate with the natural colours and hues of the reserve. As a guide, for non-feature items use colours within the A and B Groups of the British Standard BS 5252 colour chart with reflectivity level less than 35%.

- 5.2.2 Allow for colour variation where feature items require specific colours relating to Ngāti Tūrangitukua arts and culture, signage or where feature designs from the natural environment are displayed, for instance mural paintings.
- 5.2.3 When locating approved built structures and infrastructure within Tūrangi reserves consider key views within the reserves to important [whenua](#) features for instance Pihanga, Tihia, Kakaramaea, Kaimanawa Ranges.
- 5.2.4 Where practicable locate built structures into a consolidated area to retain open space. Remove redundant built structures and infrastructure.
- 5.2.5 Council is not obliged to provide fencing in reserves. In situations where fencing is required as part of a reserve contribution from a private developer along a reserve boundary, or as a condition of a resource consent application; Council may specify a fencing covenant be registered against all titles of properties with a common boundary to the reserve. Council will not be required to fund construction.
- 5.2.6 Where reserve fencing is included it will be one of the following:
- Low post and rail park fencing
  - Solid fence: up to 1.2m max
  - Permeable fence: up to 1.8m max
  - Combination solid and permeable: 1.2m solid, top 0.6m permeable.
  - Permeable fencing means a minimum of 50% visually permeable.

#### Encroachments and Vandalism

- 5.3.1 Refer to Council's policy [Encroachment on Reserves](#).
- 5.3.2 Within reserves, use built structures with robust materials, minimal maintenance, of high quality and include vandalism protection measures; e.g. anti-graffiti coating, use of robust materials.





- 5.3.3 Where practicable; built structures within reserves should maintain visibility to surrounding publicly accessible areas to increase passive surveillance. Maintain and/or avoid planting dense tall vegetation that obstructs views from surrounding roads and key viewing locations.

DRAFT

## Actions

### Events, Leases, Licences and Uses

#### Requirement for Permit for Events, Leases, Licences and Uses

6.1.1 Commercial events, eligible leases and licences, and specific uses require approval or a permit with conditions as set out in the Reserves Act 1977.

- Examples of commercial events with entry fee that require approval or permit include:
  - Music and entertainment concerts
  - Circus, carnival
  - Sporting events (with entry fee)
- Examples of eligible leases within reserves that are for the purpose of providing for community and recreation well-being and are not for profit include:
  - Sports clubs
  - Community groups
  - Recreation and leisure activities
- Examples of non-eligible leases include:
  - For profit organisations and groups
  - Churches
  - Political parties or groups
  - Gangs as defined by the Gangs Act 2024
- Examples of eligible licences within reserves that are for the purpose of supporting an approved event within a reserve, or for maintenance of a reserve and may include:
  - Food trucks, mobile refreshment stalls
  - Grazing of livestock

6.1.2 [Fees and Charges](#) for approved commercial events, leases and licences are as set out in the Long-term Plan.

6.1.3 Refer to [council's rules, regulations and licences](#) for provisions relating to licensing of alcohol, animals, building and renovations, bylaws, drones, food licensing, noise control, resource consents, signs.

#### Approval Process

- 6.2.1 Requests for events, leases, licences, and specific uses are typically submitted to Taupō District Council in the first instance or by a service request to customer services.
- 6.2.2 Requests are received by Council teams as follows:
- **Events** are directed to the Council's Events and Venues team.
  - **Leases and Licences** are directed to Council's Property and Development team.
  - **Specific reserve uses** are directed to Council's Parks and Reserves team (see 6.3.1).
  - **Alcohol and licensing** are directed to Council's Environmental Health Team.
- 6.2.3 Decisions on requests for events, leases, licences and specific uses are made in accordance with the [Mana Whakahono-ā-Rohe](#) agreement.
- 6.2.4 Applications for commercial events, leases, licences, and specific uses will be assessed against the objectives and outcomes of this reserves management plan.
- 6.2.5 Applications are also assessed against the relevant provisions of (but not limited to) the following:
- [Reserves Act 1977](#)
  - [Taupō District Plan](#)
  - Regional Plans and Strategies
  - Building Act and Building Code
  - Health and Safety standards
  - Relevant Taupō District policies, bylaws, regulations, and guidelines.





- 6.2.6 Refer to Council's [Venue Booking Policy](#) for appropriate uses of Taupō District Council venues and conditions of hire.

### **Art Works, Memorials, Installations**

- 6.3.1 Examples of specific reserve uses that require approval or permit include:
- Art works, installations, sculpture
  - Memorial plaques and seats
  - Community tree plantings, memorial trees.
- 6.3.2 Requests for art in Tūrangi reserves are assessed in accordance with the Taupō District Council [Public Art Policy](#).
- 6.3.3 Approved art works must be appropriate for outdoor conditions, use robust materials, and use crime prevention through environmental design principles (CPTED).
- 6.3.4 Art works that require high maintenance or on-going repairs will be avoided.
- 6.3.5 Requests for memorials in Tūrangi reserves are assessed in accordance with the Taupō District Council [Policy for Assessing Commemorative Memorial Applications](#).
- 6.3.6 Approved memorial trees are subject to usual council parks and reserves operation management.

## Reserve Specific Actions

### Tūrangitukua Park and Part Tūrangitukua Park

- 7.1.1 Tūrangitukua park is the primary space for sporting events in Tūrangi. The sports fields will continue to be developed and maintained to an appropriate standard for sports use.
- 7.1.2 Te Mataapuna building is alcohol free.
- 7.1.3 Continue to provide space for large specific events such as music and cultural activities subject to the sporting requirements of the park and District Plan requirements.
- 7.1.4 Provide a multi-use area that supports activities for [rangatahi](#), for example (but not limited to) bike pump track, as shown in section 8 maps of this management plan.
- 7.1.5 Horse sports will continue to be provided for within identified areas of the park.
- 7.1.6 Investigate options for the future of the horse pens with Tūwharetoa Polocrosse or other local equestrian group and enquire if they would be interested in ongoing maintenance of the pens.
- 7.1.7 Vehicles, motorbikes, and motorised modes of transport are not permitted within the grassed areas of the park, except for specific association with approved events. For example (not limited to) food trucks, medical care, event support.
- 7.1.8 Seek funding for improved fencing and bollards for the playing fields. Ensure funding is available for ongoing maintenance and drainage improvements to the park and carparking.
- 7.1.9 Direct sporting groups or individuals interested in funding options for recreation equipment and reserve uses to Council's website outlining [Funds Available](#)

## Actions

- 7.1.10 The sports fields to remain dog free for hygiene purposes with appropriate signage. The designated dog exercise area will continue to be located on the slope area as shown in section 8 maps of this reserves management plan.
- 7.1.11 Investigate an appropriate portion of the park for a dog exercise area extension within the multi-use area.
- 7.1.12 Hapū to lead appropriate naming process of Part Tūrangitukua Park.

### Te Kapua Park

- 7.2.1 Te Kapua Park is the primary space for small to medium community events and gatherings in Tūrangi – in accordance with the recreation purpose of the reserve and relevant District Plan provisions.
- 7.2.2 The local-purpose portion of the park will continue to provide for community buildings, as shown in section 8 maps of this reserves management plan.
- 7.2.3 Maintain higher levels of service and facility development at Te Kapua Park compared to other neighbourhood parks to reflect its use as a central community recreation hub.
- 7.2.4 Investigate feasibility of development opportunities and community aspirations for Te Kapua Park identified in the [Mana Whakahono](#) Committee Partnership Plan 2024, and early community engagement including:
  - Bicycle skills path for younger children.
  - Improved connectivity between Te Kapua Park and the town mall.
  - Improved ground and drainage across the park.
  - Improved, resilient pathways and connections.
  - Improved vehicle barriers to restrict unauthorised vehicle access.





### **Te Rangikahekeiwaho Reserve**

- 7.3.1 Council, Ngāti Tūrangitukua Charitable Trust and appropriate community groups to partner to manage [pā harakeke](#) plantings to a suitable standard. Refer to Ngāti Tūrangitukua Charitable Trust guide; "Care and Maintenance of a Pā Harakeke."

### **Waipapa Reserve**

- 7.4.1 Develop a business case for truck and trailer parking subject to cultural values assessment.
- 7.4.2 Provide improved signage to where the facilities are located in the town; toilets, overnight camping, and retail.
- 7.4.3 Undertake an assessment of best location for disc golf. If an alternative location is recommended, facilitate the relocation of the existing facilities.
- 7.4.4 Undertake feasibility and apply for funding for the community aspirations identified in the Mana Whakahono Committee Partnership Plan 2024 to upgrade entrances to Tūrangi with sculptures and garden management within Waipapa Reserve.
- 7.4.5 Maintain Waipapa reserve as a dog exercise area.

### **Taupahi, Firebreak, Te Koko Reserves**

- 7.5.1 Maintain Taupahi reserve as a dog exercise area (except for the playground – dogs are prohibited from sports grounds and children's play areas).

### **A, B, C, D, E (Hangerito Stream) Reserve and Water Supply Reserve**

- 7.6.1 Continue to maintain restricted public access to these reserves and associated wāhi tapu areas.
- 7.6.2 Hapū to lead appropriate naming process of these reserves.

- 7.6.3 For renaming of the reserves; Council to provide appropriate signage of new names and restriction of public access as deemed appropriate through the Mana Whakahono-ā-Rohe process.
- 7.6.4 Partner with ecological groups to seek funding for restorative native planting, pest control and ongoing management as a priority natural environment action. Refer to Waikato Regional Council rules for vegetation clearance that disturb the bed of rivers, streams, and lakes.
- 7.6.5 Undertake appropriate engagement with adjoining residents to A, B, C, D, E to raise awareness of the important cultural and ecological values and restrictions on public access.
- 7.6.6 Provide opportunities to partner with adjoining landowners to reserves A, B, C, D, E to collaborate on on-going management of the stream corridor.

### **Tūrangi Golf Course and Squash Club Reserves**

- 7.7.1 Restrict public access to significant ecological areas as identified in the Singers Ecological report dated April 2025, reference 5:2025/26. Also as shown in section 8 of this management plan for the Tūrangi Golf Course.
- 7.7.2 Partner with ecological groups for pest management and restoration of the significant ecological areas. In particular for the wetland areas; seek funding to target control of grey willow and invasive weeds including old man's beard and replacement of native planting.
- 7.7.3 Any removal of vegetation including weed species within significant ecological areas to be approved through the Mana Whakahono-ā-Rohe process (and through a resource consent process should these areas become identified Significant Natural Areas in the Taupō District Plan or Waikato Regional Plan).



- 7.7.4 Large tree species proposed for removal to include a long-tailed bat survey, and recommendations by a suitably qualified ecologist to be considered through the Mana Whakahono-ā-Rohe process.
- 7.7.5 Council to commission a cultural values assessment of the golf course to identify sites of cultural significance and incorporate recommendations from the assessment with approval through the Mana Whakahono-ā-Rohe process.
- 7.7.6 The Golf Club to provide information to patrons on the wetlands and restricted access areas. Council to apply for funding to provide appropriate signage.

#### **Connector Reserves**

- 7.8.1 Maintain connector reserves for pedestrian and mobility access throughout the Tūrangi township.  
  
Mobility access modes of transport include scooters (push, electric, mobility), bicycles, prams, wheelchairs.
- 7.8.2 Give priority to installing metal post vehicle barriers over wooden vehicle barriers. Use mobility accessible and safety methods for instance croquet hoop and squeeze bar to enable access of mobility scooters, prams, and bicycles.
- 7.8.3 Ensure funding is available to immediately repair or replace damaged or vandalised vehicle barriers and reserve features.
- 7.8.4 Investigate feasibility for pedestrian lighting in the connector reserves.



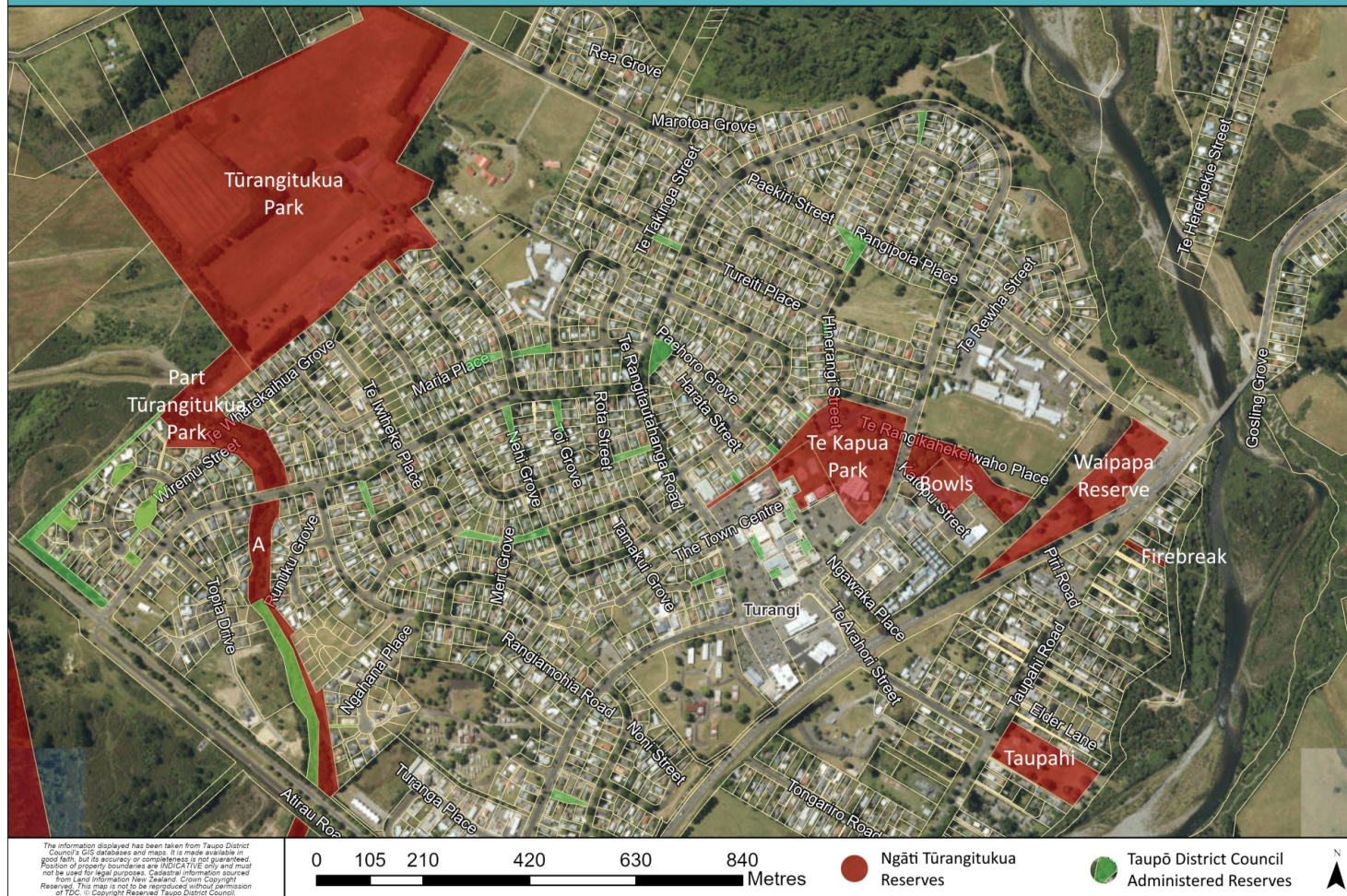


## Maps

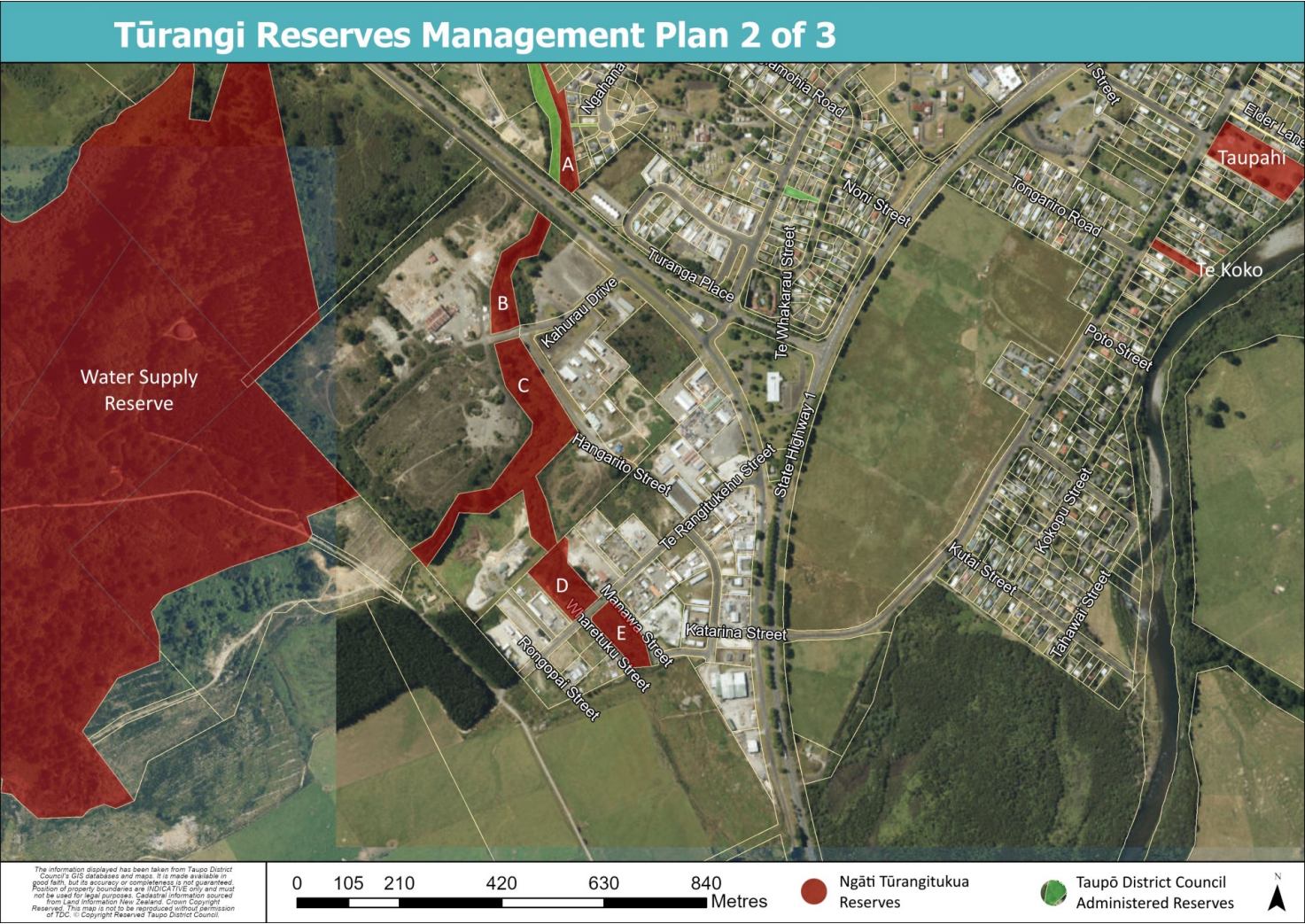
DRAFT



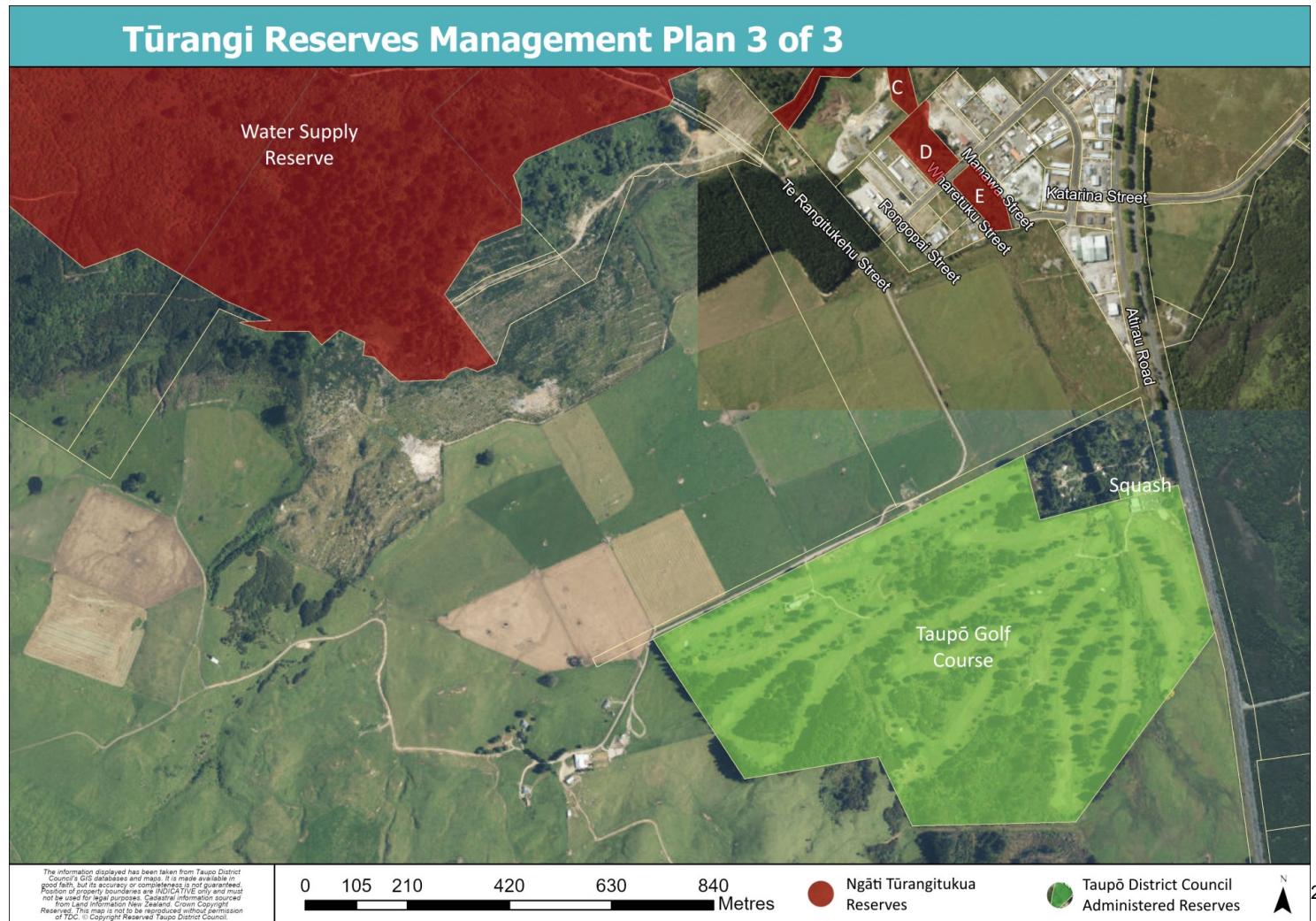
## Tūrangi Reserves Management Plan 1 of 3

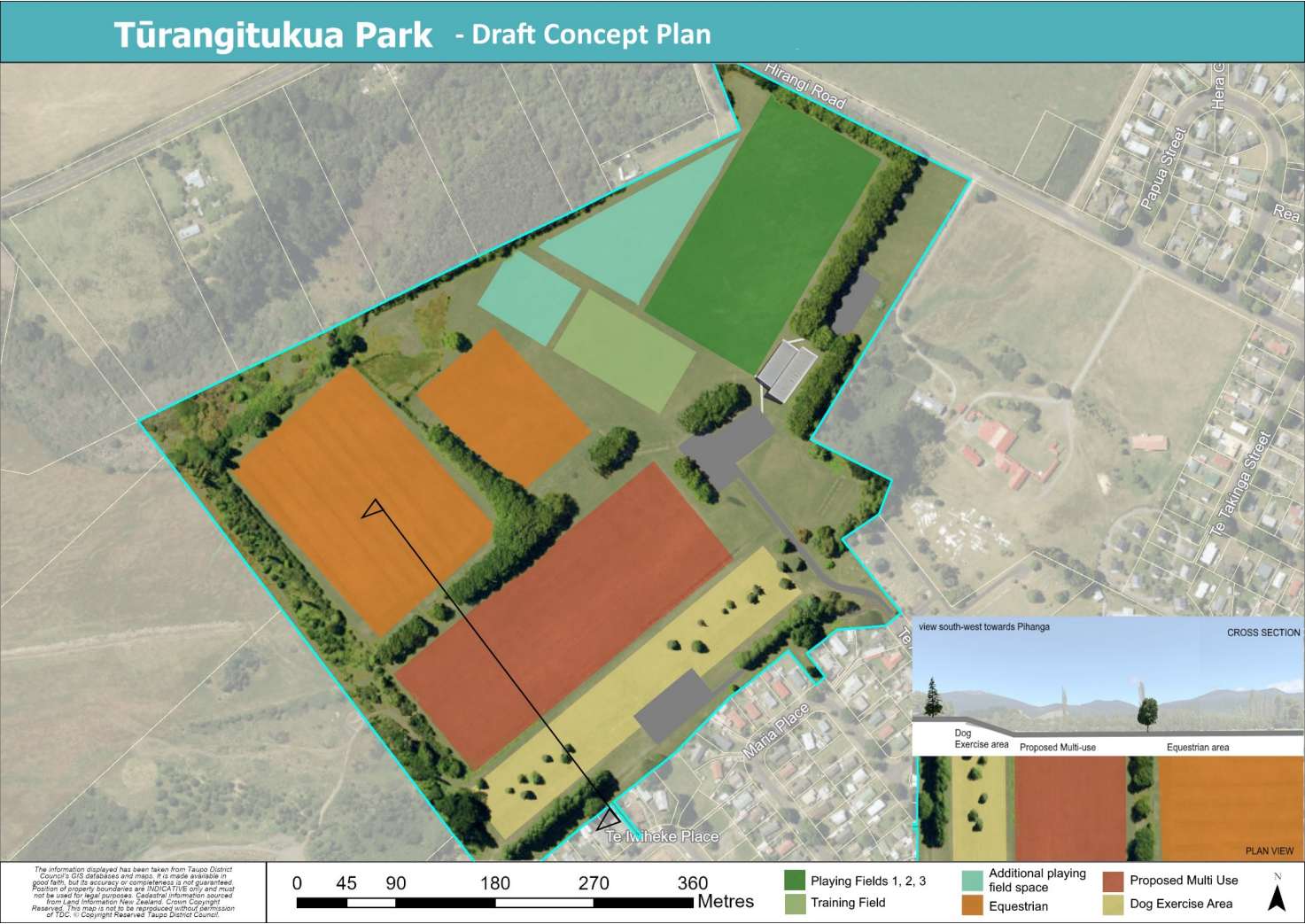




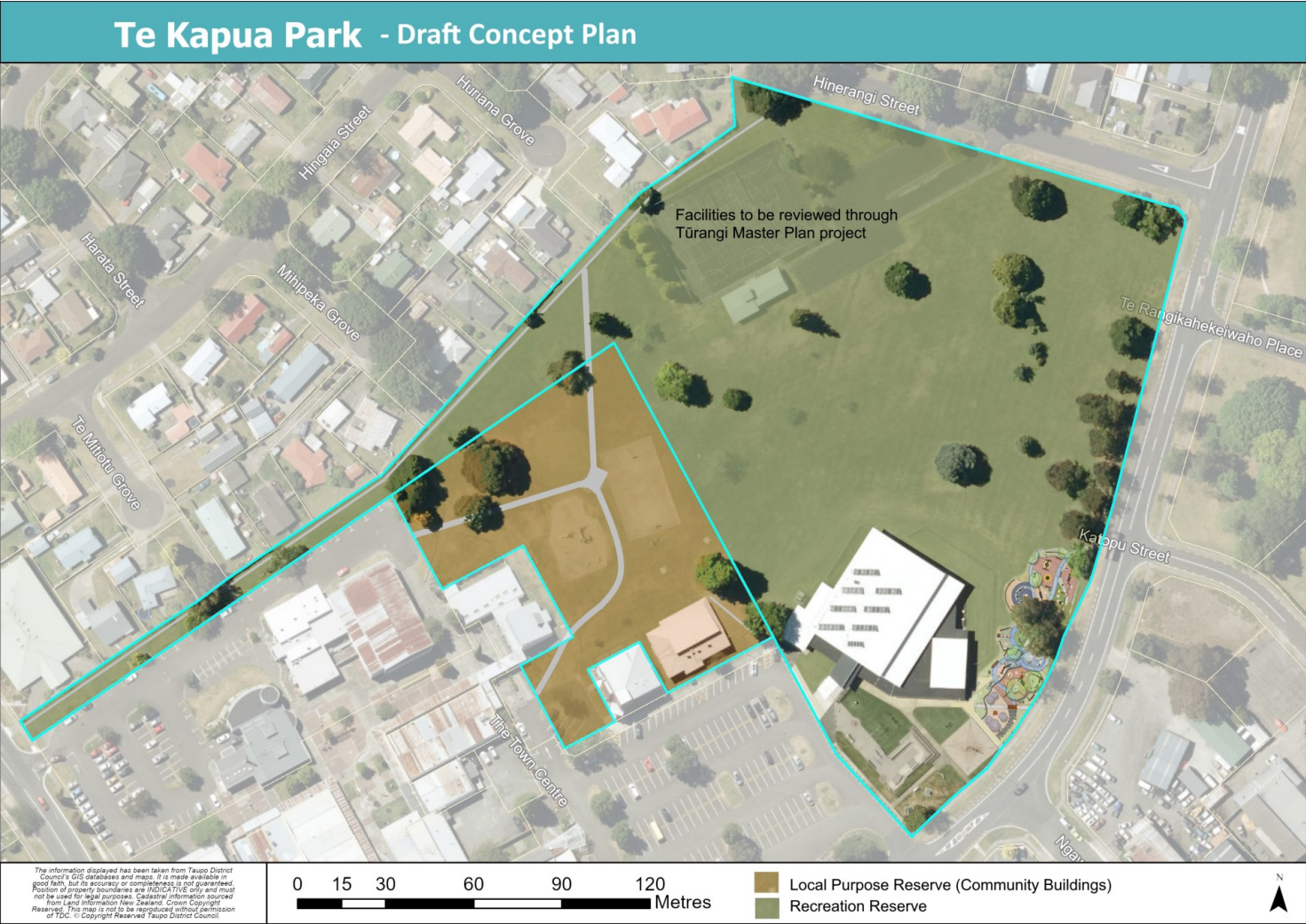














## Tūrangi Golf Course Reserve - Significant Ecological Areas





## Glossary

This section covers words and terms used both within this document and the Context Summary Document. Definitions are partly from existing council documents for context in our organisation, and from Te Aka Māori dictionary.

DRAFT





<b>Ahi kā</b>	Burning fires of occupation, continuous occupation by a group, for a lengthy period of time.
<b>Ariki</b>	Paramount chief, first-born in a high-ranking family.
<b>Aroha</b>	Love, compassion, care
<b>Hapū</b>	Kinship group, subtribe – iwi descended from a common ancestor.
<b>Iwi</b>	Large kinship group of people descended from a common ancestor and connected through whakapapa to a distinct area.
<b>Kaitiaki</b>	A guardian or trustee
<b>Kaitiakitanga</b>	The act of guardianship
<b>Kanohi ki te kanohi</b>	Face to face
<b>Kaumātua</b>	Elder or group of elders, person with status within the whānau.
<b>Kawa</b>	Customs, procedures, protocol, particularly those related to formal activities such as welcoming and speeches.
<b>Mahi</b>	Work, vocation
<b>Mahi toi</b>	Art, craft
<b>Mana</b>	Authority or influence, prestige
<b>Mana Whakahono-ā-Rohe</b>	An iwi participation arrangement under subpart 2 of the Resource Management Act, and in this instance refers to the Mana Whakahono-ā-Rohe agreement between Ngāti Tūrangitukua and Taupō District Council 2022. Among many things this sets out specific agreements for the development of the reserves management plan.



<b>Mana whenua</b>	People of the land that hold authority over a particular area through whakapapa (their ancestral connection to the whenua). In the context of this document mana whenua is Ngāti Tūrangitukua hapū.
<b>Manaakitanga</b>	Hospitality, kindness, and care for others
<b>Matariki</b>	A large cluster of stars
<b>Maunga</b>	Mountain
<b>Mauri</b>	Life force, essence
<b>Mauri tū</b>	Environmental health and wellbeing.
<b>Moana</b>	Entity of water
<b>Onepū</b>	Sandy/sand
<b>Pā</b>	Fortified village, stockade
<b>Pā harakeke</b>	Flax plantation using sustainable harvesting and maintenance techniques to allow flax to continually grow and be harvested for traditional uses.
<b>Papa tākaro</b>	Playground, play area
<b>Pūrākau</b>	Stories, traditions, myths, and legends
<b>Rangatahi</b>	Youth, younger generation
<b>Rangatiratanga</b>	Chieftainship, right to exercise authority
<b>Raranga</b>	Weaving (of flax)
<b>Rohe</b>	Territory or boundaries of tribes





<b>Taiao</b>	Environment
<b>Tangata whenua</b>	Indigenous people, born of the whenua
<b>Taonga</b>	A highly treasured object
<b>Tapu</b>	Sacred, spiritual restrictions
<b>Taupō-nui-a-Tia Management Board</b>	Represents iwi and community interests to manage the Taupō waters as if they are a reserve for recreation purposes.
<b>Te Matawhānui</b>	The vision
<b>Te Tiriti o Waitangi</b>	Te Reo Māori version of the Treaty of Waitangi
<b>Tikanga</b>	Customs, protocols, and behaviour guidance.
<b>Tohu</b>	Sites of significance to iwi and hapu, cultural landmarks
<b>Tū Hikitia</b>	Uplifting or elevating in the context of well-being, to improve or enhance
<b>Turangawaewae</b>	Place where one has the right to stand - place where one has rights of residence and belonging through kinship and <i>whakapapa</i> .
<b>Uri</b>	Descendant, relative, kin
<b>Waharoa</b>	Main entranceway, threshold gateway
<b>Wāhi tapu</b>	Sacred place, sacred site
<b>Wānanga</b>	To meet, consider and discuss
<b>Whānau</b>	Family



<b>Whakapapa</b>	Ancestral connections defining identity and place
<b>Whenua</b>	Land, placenta

DRAFT



# **TŪRANGI RESERVES CONTEXT SUMMARY DOCUMENT**

## **2025**



## Contents

1. Introduction .....	3
2. Ngāti Tūrangitukua .....	4
3. Reserves History .....	6
4. Purpose of Reserve Management Plans .....	8
5. Mana Whakahono-ā-Rohe Agreement .....	9
6. Description of the Tūrangi Reserves .....	10
7. Significant Values within the Reserves .....	13
8. Recreation Values .....	15
9 Reserve Issues and Opportunities .....	16
10 Summary of Relevant References and Legislation .....	18
11 Glossary .....	27



## 1. Introduction

This context document sets out the key relevant information that has informed the Tūrangi Reserves Management Plan. While it is not possible to cover every detail of relevant information in this summary, this context document provides a reference to help direct where to find more information. References to the relevant information are included, and this document will be updated as required.

The context summary document covers:

- Ngāti Tūrangitukua values
- Historical information
- Purpose of a reserve management plan
- Legal requirements
- Reserve descriptions and features
- Summary of community engagement and feedback
- Reserve issues and opportunities
- Relevant documents.

This context summary and the Tūrangi reserves management plan have been co-drafted between Ngāti Tūrangitukua representatives and Taupō District Council. The Tūrangi reserves management plan relates to the reserves in the Tūrangi township that are in Ngāti Tūrangitukua ownership, along with the reserves that are under Taupō District Council administration.

This document and the accompanying reserves management plan have been prepared under the guidance of the Mana Whakahono-ā-Rohe agreement between Ngāti Tūrangitukua and Taupō District Council established in 2022. This agreement outlines the partnership commitments made by both parties and how the partnership of the reserves management will be achieved.

The Tūrangi reserves have deep cultural heritage and significance to Ngāti Tūrangitukua. The reserves (and the wider Tūrangi township) are cultural landscapes. Along with the cultural significance of the lands and their reserves; there are the historical grievances that were suffered by Ngāti Tūrangitukua

during compulsory land acquisitions of the government of the time. A summary of these events is outlined in this document.

Considering the high cultural significance of the Tūrangi reserves and the status of Ngāti Tūrangitukua hapū as mana whenua; this context document and the reserve management plan are drafted with Ngāti Tūrangitukua values at the forefront.



## 2. Ngāti Tūrangitukua

The Ngāti Tūrangitukua vision:

*Tūrangitukua standing tall within the kawa and tikanga of Pihanga*

Ngāti Tūrangitukua is [mana whenua](#) of Tūrangi and maintains [kaitiakitanga](#) over their [rohe](#) and area of interest. Ngāti Tūrangitukua claim the [kaitiakitanga](#) and [rangatiratanga](#) over all properties and assets within its immediate area of influence and in accordance with its own [tikanga](#) and [whakapapa](#).<sup>1</sup>

Ngāti Tūrangitukua is a [hapū](#) of Ngāti Tūwharetoa [iwi](#), descended from their ancestor; Tūrangitukua. At the time that Ngāti Tūwharetoa established themselves in the inland parts of the central North Island; their ancestor Tūrangitukua was [Ariki](#). His parents were Ariki Tunono and Te Rangihuruao.

Te Rangihuruao (Tūrangitukua's mother) had influence over the length of Kaimanawa and from Ngaruroro in Kaweka to Tongariro. Eventually; homesteads were established on both sides of the Tongariro River and its tributaries.

Settlement was also established along what is now known as Hīrangi Road. Hīrangi is the name of the marae on Ngāti Tūrangitukua whenua situated at the foot of Pihanga [maunga](#). Its full name "Te Hī o te Rangi" refers to the heat shimmer rising from the [onepū](#) along the Tongariro River. Hīrangi marae was established around 1910.

### 2.1 Tūrangitukua Values

Reference to Ngāti Tūrangitukua values and principles are more appropriately outlined within [hapū](#) cultural assessments and documents by representative hapū members. The values and principles that are outlined in this document are the

key ones that have informed the reserves management plan but are not the only ones to consider.

A cultural values and impact assessment was prepared in 2017 by Tihia Ltd for the development of the reserves management plan. A hapū [wānanga](#) was held in July 2025 to discuss the wider reserve values and guiding principles. These were aligned with the Tūrangi Co-Governance Committee Partnership Plan 2024. A broader assessment of the township is proposed to be undertaken in 2025/2026. An update of that assessment will be added to this document.

The following values and principles are taken from the Tihia cultural values and impact assessment, Tūrangi Co-Governance Committee Partnership Plan and hapū wānanga. The values and aspirations of the Tūrangi Co-Governance Committee help to provide a guide to the development of Council's key policies, plans, strategies and bylaws that are within the Mana Whakahono boundary area.

Of relevance these include:

#### Pihanga Manaakitanga and Aroha

Embodying the nurturing care and protection of Pihanga, inspired by the sustaining spirit of a mother, emphasising decisive determined actions rooted in [aroha](#) and [manaakitanga](#) to ensure the well-being of the Tūrangi community. Pihanga teaches us to care deeply and act decisively for our community's well-being.

#### Tū Hikitia

Gather, support and uplift our heritage, culture and collective aspirations. Tying [hapū](#) and [whānau](#) within the region with deep ancestral connections to the land and its [pūrākau](#). Tū Hikitia is at the heart of our efforts to preserve and celebrate our cultural heritage, informing programmes that connect us with our roots and shared aspirations.

<sup>1</sup> Mana Whakahono-ā-Rohe between Ngāti Tūrangitukua and Taupō District Council.





### Kaitiakitanga of Te Taiao

Commits us to environmental stewardship leading to sustainable practices that protect and restore our natural surroundings.

### Rangatiratanga

Weave together diverse contributions of our community with integrity, diligence and deep respect for self-determination. To bind together a group. Rangatiratanga emphasises collaboration – pivotal in our approach to governance and community engagement.

These values steer our community aspirations, mapping a path toward a united, prosperous and resilient future for Tūrangi.

## 2.2 Tūrangitukua Principles

Along with these key values, key principles are applied to enhance cultural values within the reserves.

### Mana and Ahi Kā

[Hapū](#) have a living and enduring presence and are valued within our rohe. Ngāti Tūrangitukua hold [ahi kā](#) and [mana whenua](#) around the southern end of Lake Taupō moana with Tūrangi township forming the homelands.

### Tohu

Significant sites are identified, managed, protected, and enhanced. There are many [tohu](#) within the Tūrangi reserves, and there are two specific reserves identified as [wāhi tapu](#).

### Whakapapa and Mahi Toi

Hapū names and narratives are celebrated, captured, and expressed creatively and appropriately. The names of the reserves are important to Ngāti Tūrangitukua as they reflect Tūrangitukua [whakapapa](#) and connection to our [whenua](#).

### Taiao and Mauri Tū

The natural environment and its health is protected, restored, and/or enhanced. Use of the reserves must ensure that recreational activities are compatible with the te [taiao](#) and ensure ongoing [mauri tū](#). This may include appropriate restoration to the mauri of the environment and a community approach to ongoing care and maintenance.



*Hirangi Marae photo source Ngāti Tūrangitukua Charitable Trust*

### 3. Reserves History

The history of the reserves in Tūrangi and the wider whenua cannot be adequately summarised into one page. This is a brief overview taken from previous cultural assessments of the area. In instances where further work or specific projects are proposed for the Tūrangi reserves, it is recommended that more extensive research be undertaken relating to those reserves.

As mentioned in the previous section; Tūrangi comprises the ancestral lands of Ngāti Tūrangitukua hapū and the area was owned and farmed by whānau of the hapū. All of the lands that were taken for the Tūrangi town including the reserves were once under the ownership of Ngāti Tūrangitukua.

When European settlement reached the Tūrangi area in the 1880s the population increased with the introduction of the trout fishery. By 1960 the settlement reached a population of around 500, centred on the river corridor. This was known as the Taupahi area.



*Aerial photo of the Taupahi area 1958 and surrounding farms in the Tūrangi area, source Retrolens.co.nz*



During the 1960's; the government created the Tongariro power development scheme. It chose the Tūrangi area for a new township that would service the large workforce needed to construct the project. Between 1962 and 1964 the government acquired a significant portion of Ngāti Tūrangitukua ancestral land to construct the town. This land was taken under the Public Works Act 1928 and the Tūrangi Township Act 1964.



*Aerial photo of the start of construction for the Tūrangi township 1964, source Retrolens.co.nz*

At the height of the construction projects during the 1970s, the Tūrangi population peaked at around 9,000. At this time, several parks and reserves were set aside for public use. Significant historical grievances were suffered by Ngāti Tūrangitukua at this time. A Treaty of Waitangi claim was lodged in 1989 and considered by the Waitangi Tribunal in 1994. The basis of the claim was the taking of extensive areas of ancestral land owned by Ngāti Tūrangitukua whānau.



*Aerial photo showing the construction of the Tūrangi township 1967, source Retrolens.co.nz*

After negotiations in 1999, the Ngāti Tūrangitukua Claims Settlement Act was passed. The Treaty of Waitangi tribunal found that the Crown had breached the Treaty principles and adversely impacted Ngāti Tūrangitukua hapū.

The Crown apology noted that it failed to consult fully or adequately with Ngāti Tūrangitukua throughout the process of construction of the Tūrangi township and did not give due respect to Ngāti Tūrangitukua; in particular their kaumātua and their mana as tāngata whenua.

Part of the settlement redress led to the return of confiscated Tūrangitukua land including what is now more commonly known as the reserve lands within the Tūrangi township. These reserves were returned to Ngāti Tūrangitukua by vesting them with the Ngāti Tūrangitukua Charitable Trust. They include Te Kapua Park, Tūrangitukua Park, Te Rangikahekeiwaho, Taupahi, Water Supply and the reserves surrounding Hangarito Stream.



Ngāti Tūrangitukua hapū has post treaty settlement governance status through the Ngāti Tūrangitukua Charitable Trust. This is the entity that manages the Ngāti Tūrangitukua owned reserves on behalf of the hapū.

Along with the return of these reserve lands to the hapū there was an agreement for Taupō District Council to continue to maintain and manage them for the benefit of the wider Tūrangi community. In general, these reserves are to continue to be managed consistent with their reserve purpose. There are some exceptions such as the Kutai Street reserves and Kohineheke reserve.

In 2012 around 20 reserve names and local roads in Tūrangi that were previously misspelled or inappropriately named were corrected or changed to reflect their Ngāti Tūrangitukua whakapapa and history. Some examples of these were McLaren Park to Te Kapua Reserve, Cherry Tree Reserve to Koko Reserve, Kaheke Place to Te Rangikahekeiwaho Place, Tautahanga Road to Te Rangitautahanga Road, and Tod Close to Wharepapa Close.







## 4. Purpose of Reserve Management Plans

Reserve management plans are a requirement under the Reserves Act 1977. The Tūrangi reserves management plan sets out how reserves in Tūrangi will be used, managed, and protected. It reflects the community's vision while safeguarding the values and purposes of each reserve.

Most reserves within the reserves management plan are for recreation, however some also support essential services, such as water supply or utility access. These reserves still contribute to recreation and connectivity across Tūrangi.

The plan will help guide future decision-making and can support funding applications through Council's Long-term Plan and other grants.

### 4.1 Recreation Reserves Purpose

Recreation reserves are for the purpose of providing recreation and sporting activities. They are for the welfare and enjoyment of the public and must also provide for protection of the natural environment and the beauty of the countryside.

Recreation reserves typically include playgrounds, picnic areas, sports fields, neighbourhood parks and outdoor activity areas. These reserves can be leased for community activities, however there are specific requirements to ensure that leasing is done in a way that gives effect to the purpose of the reserve. In Tūrangi these reserves the bowling, squash and golf clubs and clubrooms in Te Rangikahekeiwaho reserve.

### 4.2 Local Purpose Reserves

Local purpose reserves are not usually included in reserve management plans because they tend to have a specific utility use or service. These reserves often have limited opportunities for the community to input due to their primary purpose

– for example they might hold underground services for the local community or hold the town water supply.

Some local purpose reserves are included in this management plan; being Water Supply reserve and the connector reserves. This is because Water Supply reserve has important cultural values and specific access management considerations. Connector reserves are included because they have an element of recreation use to them. These reserves are described further in reserve descriptions in the reserves management plan.

## 5. Mana Whakahono-ā-Rohe Agreement

The Mana Whakahono-ā-Rohe is the partnership agreement between Ngāti Tūrāngitukua and Taupō District Council. It has specific matters to consider when developing the reserves management plan for Tūrangi.

A shared te matawhānui of the Mana Whakahono-ā-Rohe is;

### NGĀTI TŪRANGITUKUA

*Nā te mahi tahi tātou e auaha ai te taurikura mō Ngāti Tūrāngitukua. By working together, we will create a future for Ngāti Tūrāngitukua.*

### TAUPŌ DISTRICT COUNCIL

*The Council's aspirations are to work in partnership with Ngāti Tūrāngitukua reflecting their status as mana whenua by working together.*

This agreement amongst many things provides for a partnership approach between Ngāti Tūrāngitukua and Taupō District Council to develop and co-manage the reserves in Tūrangi. The reserves that it covers are provided in an appendix to the agreement.

This partnership approach is achieved through the Tūrangi Co-Governance committee made up of equal representation of Council governance and Ngāti Tūrāngitukua hapū members. In doing so, the Co-Governance committee directly engages with the Ngāti Tūrāngitukua Charitable Trust.

The relevant parts of the Mana Whakahono-ā-Rohe are:

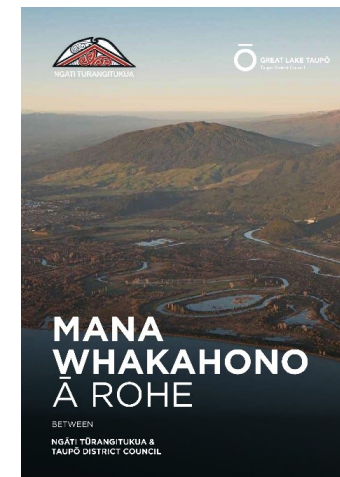
- The reserve management plan will provide the strategic direction for the future management and other activities in relation to the reserves.



- The Co-Governance committee has the discretion to exclude any local purpose reserve from the management plan if it thinks appropriate to do so.
- The Council can include the Tūrangi reserves management plan as a chapter of a broader reserve management plan for the wider Taupō district.

The relevant operations matters are:

- The council will continue to undertake the operational management of the reserves.
- The Committee will work through a process with the Ngāti Tūrāngitukua Charitable Trust to identify and facilitate opportunities for Ngāti Tūrāngitukua to be involved in the management of the reserves.





## 6. Description of the Tūrangi Reserves

Tūrangi town is the northern gateway to the Tongariro National Park. It is popular for its connections to the national park along with recreational fly fishing of trout on the Tongariro River.

The reserves are mostly located within the urban area of Tūrangi, providing recreation, sports parks, playgrounds, and pedestrian access between streets and connections to the river.

The reserves covered in the management plan include;

- Tūrangitukua Sports Park
- Te Kapua Park
- Te Rangikahekeiwaho Reserve
- Waipapa Reserve
- Taupahi, Firebreak, Te Koko Reserves
- Reserves A-E and Part Tūrangi Park Reserve (Hangarito Stream)
- Water Supply reserve
- Tūrangi Golf Course and Squash Club
- Connector reserves.

The main reserves are Ngāti Tūrangitukua reserves with the exception of the Tūrangi Golf Course, Squash Club and residential connector reserves.

Local purpose plantation, utility and car parking reserves are not included in the reserves management plan. This is because their functional requirements are infrastructure and services and there is little ability for the community to have input on these reserves. Road corridor and Crown reserves are not included as these are either covered by other legislation or they are managed by other agencies.

The local purpose connector reserves are included in the Tūrangi reserves management plan because of their open space recreational use. Similarly, the local purpose Water Supply reserve is included to address sensitivities around public access. This is explained further in the following sections.

### 6.1 Tūrangitukua Park

Tūrangitukua Park is a recreation reserve and the largest of the Tūrangi reserves being open grass fields and located just out of the main town area. It is mostly used for field sports like rugby, league, and football with two of the fields having lighting for evening use. The fields are also used for marae sports, Matariki celebrations, horse events, grazing, and for music events. Equestrian wooden pens were established in 2010 by the Tūwharetoa Polocrosse club. These require maintenance. Community horse events are still held at the park.

Tūrangitukua Park is also home to the recently established Te Mataapuna sports club rooms. Along with servicing sporting clubs, Te Mataapuna also acts as a community facility for rent with a main hall and kitchen.

### 6.2 Te Kapua Park

Te Kapua Park is partially recreation reserve and partially local purpose – community. It is centrally located to the Tūrangi township and is home to the key community facilities in Tūrangi including; the public swimming pools, new award winning [papa tākaro](#), Senior Citizens Hall, skate park, gym, netball, tennis and basketball courts. Its location makes the reserve an ideal hub for community activities.

Te Kapua papa tākaro was a partnership project between Ngāti Tūrangitukua and Taupō District Council. The playground integrates local history, storytelling and cultural narrative into its signage and play spaces. It is valued and enjoyed by young families and children.

### 6.3 Te Rangikahekeiwaho Reserve and Bowling Club

Te Rangikahekeiwaho Reserve is a recreation reserve and contains an access road, car parking and four buildings for community use, currently housing Manaaki Fitness, Artworks Studio, and Whanau Ora ki Tūwharetoa. One building is currently disused. [Pā harakeke](#) was planted in the reserve by the Scouts club around 1983. There has been lack of maintenance over the years. Ngāti



Tūrangitukua Charitable Trust has developed a guide called "Care and Maintenance of a Pā Harakeke." Adjacent to this reserve is the Tūrangi Bowling Club. Both are Ngāti Tūrangitukua reserves.

## 6.4 Waipapa Reserve

Waipapa Reserve is a Tūrangitukua reserve on the northern entrance to Tūrangi beside State Highway 1. It is a recreation reserve with a carpark that provides a rest stop for travellers and stopping point for truck drivers. The car park is used by locals and visitors to park, cross the highway and access the Tongariro River Trail for walking and biking.

Waipapa reserve features a scenic nature walkway with mosaic artworks created by local community members. This walkway leads directly into town and Council customer service centre. Waipapa Reserve also features a disc golf course, and off-leash dog exercise area.

The legal boundary of Waipapa Reserve is smaller than the physical grass area utilised as reserve. The remaining part of the reserve is within the State Highway 1 corridor and therefore under the administration New Zealand Transport Agency Waka Kotahi.

## 6.5 Taupahi, Firebreak, Te Koko Reserves

These are Tūrangitukua reserves and are recreation reserves located adjacent to the Tongariro River Trail off Taupahi Road.

Taupahi reserve has a carpark and is often used as a pick-up point for white-water rafting trips on the Tongariro. The reserve directly connects to the Tongariro River Trail for walking, biking and fishing. The grassed area of the reserve offers facilities including public toilets, a children's play area, and an off-leash dog exercise area. The portion of the river here is often used for swimming.

Firebreak and Te Koko reserves provide pedestrian access and linkage from the road frontage to the Tongariro River trail.



## 6.6 Hangarito Stream (A, B, C, D, E Reserves)

The Hangarito Stream has been identified by Ngāti Tūrangitukua as a place of special significance. It is a combination of recreation reserve and local purpose – drainage reserve.

As the only relatively natural waterway still running through the township, it is an important location for biodiversity and water quality improvements.

The area is officially identified by the nondescript identifiers of Reserves A,B,C,D,E and Part Tūrangi Park Reserve. This is not an appropriate reflection of the reserve or its importance.

## 6.7 Part Tūrangitukua Park

This recreation reserve connects the lower stream corridor from A, B, C, D, E reserves (Hangarito Stream) to Tūrangitukua Park. Pedestrian recreation access extends through the reserve with a small bridge crossing the stream corridor. The wider reserve forms an important ecological connection and corridor along Hangarito Stream. Not currently appropriately named.

## 6.8 Water Supply Reserve

The reserve known as the Water Supply Reserve is a Ngāti Tūrangitukua reserve. It is set aside as local purpose – water supply. The area has been identified by Ngāti Tūrangitukua as a place of special significance. As one of the few larger unmodified reserve landscapes in Tūrangi, the scale of the reserve and its use as an area for water treatment and supply; has the potential and requirement to remain unmodified and if possible be retained as a natural undeveloped open space.

The current name reference of the reserve as a water supply reserve is not an appropriate reflection of the reserve or its importance.



## 6.9 Tūrangi Golf Course and Squash Club

Tūrangi Golf Course is on the southern entrance to Tūrangi on State Highway 1. The golf course operates on council administered land. The Tūrangi Golf Club was established in 1967, initially without a golf course. Two years later, members formed nine temporary greens and in 1971 the full 18 holes were opened. The golf course is surrounded by pockets of deciduous trees and foliage, featuring a showy autumn display.

An ecological assessment by Singers Ecological 2025 identifies three wetland areas that qualify as significant natural areas. Wetland 1 is 0.49 hectares. Areas of native secondary forest adjacent to wetland 1 are also included as significant. Wetland 2 is 2.1 hectares Wetland 3 is 0.673 hectares. Wetlands are nationally threatened, and these wetlands have moderate to high representation of wetland habitat. Long-tailed bats (pekapeka-tou-roa) are present. The ecological assessment by Singers 2025 includes management recommendations. A cultural values assessment for the golf course is to be undertaken.

Adjacent to the golf course reserve is the Tūrangi squash club. This reserve includes the squash club building and shares a portion of the car park with the golf club.

## 6.10 Residential Connector Reserves

The Connector Reserves are local purpose – utility Council administered reserves. They are medium sized green spaces that serve as accessways between streets. They tend to be the width of a standard residential section and around five sections deep. They provide a non-motorised access link between the meandering streets and cul-de-sac roads in Tūrangi.

While most of the connector reserves are classified as local purpose utility reserves due to their primary purpose of access, around half feature playground equipment such as swings and seesaws.



## 7. Significant Values within the Reserves

The reserves within Tūrangi have areas of significant value. These are areas that are considered to be matters of national importance under the Resource Management Act 1991 and require protection. At the time of creating this document this Act is the key environmental legislation implemented through national policy statements, regional and district plans (amongst others). The Taupō District Plan has specific provisions relating to these matters to consider.

Areas of significant value may be more wide reaching; however, this section provides a summary of the recorded areas of significant value. This is based on technical studies; cultural values and impact assessment, recorded archaeological sites, ecological and landscape assessments and definition of natural character areas.

### 7.1 Cultural Sites / Wāhi Tapu

Areas of wāhi tapu within the Tūrangi reserves include Hangarito Stream and the Water Supply Reserve. The specific reasons for their wāhi tapu status are sensitive to Ngāti Tūrangitukua and not for publication. However, cultural assessments identify these sites as having significant cultural value. These assessments recommend that public access to these areas remain restricted and that this be clearly stated in the reserve management plan.

The Tūrangi Golf Course also has sites of cultural significance being located on the lower slopes of Pihanga. Findings of the cultural assessment will be added here.

### 7.2 Archaeology

Recorded archaeological sites are located throughout the foothills of Pihanga to Tihia, Kakaramea and through Tokaanu.

Archaeological sites near the Tūrangi Golf Course and Water Supply reserve provide evidence of early habitation in the area. They include; a homestead, pā, and pits. These are recorded as archaeological sites T19/259, 260, 261, 262.

### 7.3 Ecological and Landscape Values

The Tūrangi reserves that are located along the streams and rivers and along the base of Pihanga have remnant and regenerating ecological and landscape values. The recorded sites are within Water Supply reserve and Tūrangi Golf Course. All of the riverside and stream connector reserves have the potential to be ecologically restored and provide a connection to these recorded sites. These are explained further by location:

#### Water Supply Reserve

A portion of Water Supply reserve includes Significant Natural Area (SNA) 070 Te Ponganga Saddle Road Forest. Here the vegetation is noted as whauwhaupaku-kānuka/rāhau, kamahi-rewarewa, kōhūhū-māhoe forest.

The Significant Natural Area criteria met are 9 and 11. It is noted as a healthy representative of indigenous vegetation and part of an ecological corridor extending from Tongariro National Park to the Otorohonga district. It provides an ecological buffer to the north-eastern boundary of the Tongariro National Park.

Part of Water Supply reserve includes Amenity Landscape Area (ALA) 33 – Pihanga Base North in the Taupō District plan. The important landscape values here are noted as; “a continuous visual open space backdrop to the Tūrangi and Tokaanu townships, high amenity value, not as prominent as the mountain.” Upper Pihanga is identified as an Outstanding Natural Landscape.

#### Tūrangi Golf Course

The Tūrangi Golf Course contains three wetland areas. Under the Waikato Regional Council significance criteria, all wetlands have significant value due to their threatened status. The small wetland areas are located within the vegetated areas between the grassed fairways and are in good condition. The golf course also contains a significant area of regenerating kānuka forest within an adjoining vegetated area. The wetland vegetation type is noted as dominantly wetland plants; harakeke, raupō, kiokio fern and sedge grasses. Toetoe and mānuka are also present. Indigenous Long-tailed bats were detected within the significant natural areas.



## 7.4 Natural Character Values

Natural Character in the Taupō District Plan is addressed through the Foreshore Protection Area. This is a 20m natural character corridor alongside defined lakes and rivers including the Tongariro River. The district plan requires a 5m building setback from this corridor. None of the reserves the Tūrangi reserves management plan are located within the Foreshore Protection Area, however one reserve – Taupahi is within the 5m building setback.

Natural character is also addressed in the district plan through identifying all wetlands in the district in the Natural Values section. Tūrangi Golf Course wetlands that have high natural character and are subject to these provisions.



## 8. Recreation Values

Tūrangi's reserves are highly valued by its community and by visitors, particularly for their diversity. They are what gives Tūrangi its feeling of being nestled in the trees in a river and mountain setting.

The key values through community feedback is that reserves are valued for community events and for whānau and hapū cultural and sporting events. Of particular note was; Waitangi day celebrations, pā wars, Christmas in the park, Matāriki celebrations, field sports games and horse events.

The Taupō District Council Recreation and Sport Strategy 2023 has specific principles for providing and improving the reserves in the district. These are also outlined below.

### 8.1 Open Space Values

The combination of river corridor, strong visual connection to Pihanga, parkland reserves and abundance of trees provide the town with an open space and natural character unique to the Taupō district. Tūrangi (and Mangakino) are not as densely vegetated settlements. Deciduous trees and seasonal autumn colour are important to the open space values of Tūrangi both for visitors and locals. This colour is striking when viewed within the evergreen native vegetation setting of the Tongariro River corridor.

The combination of low-density housing and vegetated network add to the open space feel of Tūrangi as the northern gateway to the Tongariro National Park. This is highly valued by the community and visitors, particularly those who come to Tūrangi for fishing and connections to the mountains. The reserves play an important role in providing these values.

### 8.2 Sportsgrounds and Facilities

The Council's Recreation and Sports Strategy notes that sportsgrounds and facilities like pools are important for promoting social connections to the community and venues for events and competitions. Tūrangi's sportsgrounds and facilities provide for a wide range of activities for a small population. Te

Mataapuna in particular is identified in community feedback as being highly valued.

Council's principle on sports grounds and facilities is that it acknowledges the role and benefit these provide to the community, but with restricted budgets and limited resources this needs to be done in a measured way.

### 8.3 Signage, Wayfinding, Cultural Narrative

Signage and story boards are a way to communicate the important cultural narrative and information about the reserves. Early community engagement noted signage is highly valued but there is a lack of appropriate history in the reserves. The community feedback noted support for further information on Ngāti Tūrangitukua history, where hapū see this as being appropriate.

### 8.4 Infrastructure and Services

Recreation and open space reserves are not ideal locations for utilities and infrastructure services. However, at times they are the only practical location available. From time to time some services are required to be located within recreation and open space reserves. This needs to be balanced against the open space and recreation values of the reserves and particular consideration is needed on the design, colours, and location within a reserve. The Taupō District plan has specific provisions on this type of development in reserves.

### 8.5 Public Access

Most of the reserves within the Tūrangi reserves management plan are publicly accessible. There are some where public access is not desirable due to cultural reasons or specific management requirements. Hangarito Stream reserves (A, B, C, D, E) and Water Supply reserves are examples of these.





## 9 Reserve Issues and Opportunities

### 9.1 Community Engagement

Community engagement on the Tūrangi Reserves Management Plan began in 2016 with 17 responses from the community received. The project was then put on hold while the Mana Whakahono-ā-Rohe was being established.

Community engagement began again in February 2025. This included online feedback forms, community engagement sessions at the weekend Tūrangi market and an engagement session with the Tūrangi Rangatahi Hub. During the 2025 engagement, 33 responses were received, and the feedback was collated with the 2016 responses. In total 50 responses from the community were received.

In addition, submissions from the 2024 Long-term Plan were collated from Ngāti Tūrangitukua hui-a-hapū, and from Ngāti Tūrangitukua Charitable Trust submissions. Specifically, responses and submissions as they related to the reserves in Tūrangi. These were added to the overall feedback responses.

The Mana Whakahono-ā-Rohe Committee Partnership Plan was prepared in 2024. This presents the committee's vision and plans for Tūrangi and is relevant to the reserves and their management. These aspirations are considered in the reserves management plan.

A hapū wānanga with Ngāti Tūrangitukua was held on Saturday 5th July to discuss hapū aspirations and desired outcomes for the reserves. This reinforced matters raised in previous engagement. Also, the importance of the relationship of Ngāti Tūrangitukua with Pihanga, and the need to incorporate her into the values of the reserves management plan.

### 9.2 Key Topics

The key themes from the overall feedback are:

- Cultural values

- Natural values
- Public Access and Safety
- Recreation Values
- Events and Licences
- Art, Commemorative features and Remembrance in reserves

### 9.3 Summary of Issues

The key issues from feedback are:

- **Cultural values** – The need to protect and respect areas of wāhi tapu, and acknowledge the reserves owned by Ngāti Tūrangitukua.
- Not appropriate for public to access culturally sensitive reserves.
- History/stories are not captured and displayed on reserves.
- Concern that historical leases are automatically renewed rather than going through an appropriate process.
- Some reserves still not appropriately named.
- **Natural values** – Fly-tipping in reserves a concern, some feel it is because of high rubbish tip dumping fees.
- Some reserves are overgrown, invasive weeds, gully and stream area in need of restoration. Improvements to stormwater needed.
- **Recreation values** – Concern over vandalism and need to minimise anti-social and illegal behaviour. Particularly in the connector reserves.
- Lack of park furniture and public toilets at key reserves.
- Concerns for mosaic art (at Waipapa reserve) being vandalised
- Lack of facilities, e.g. toilets, BBQ, picnic tables, some need removing and no longer fit for purpose.
- Replace old facilities with a new indoor multipurpose facility for sports and community centre.
- Not enough for rangatahi to do.
- Signage needs improving.



- **Events, Commercial Activities** – Lack of process to assess commercial and non-commercial activities and use of reserves.
- Uncertainty of what the process is for events and who to contact in council.

## 9.4 Summary of Opportunities

- **Cultural values** – Opportunity to better express Ngāti Tūrangitukua cultural narrative and art. Particularly by rangatahi.
- Opportunity to provide cultural education and artwork lead by Ngāti Tūrangitukua.
- Opportunity to develop an appropriate process for considering renewal of leases.
- Planting opportunities for kai and [rongoā](#).
- **Natural values** – Ecological restoration of the waterways.
- Adopt a plot scheme – gather interested groups to help look after the gullies and ecological areas.
- Maintain relationship with Tongariro Plant Nursery to provide native seedlings.
- Establish a botanical garden of native plants.
- Opportunity to utilise pūrākau to inform Mātauranga Māori approaches to environmental enhancement.
- **Recreation values** – Overall like for the number of reserves and their range of different uses.
- Connector reserves provide good connections between streets.
- Want for community gardens, outdoor gym equipment, better sporting requirements – painted lines on sports fields.
- Opportunities to better support the growing population and surrounding growing settlements – e.g. Pukawa, Omori, Kuratau, Motuoapa.
- Replace / renew facilities for rangatahi, e.g. pump track.

- **Events, Commercial Activities** – Lots of specific requests for activities and facilities in reserves – opportunity to establish a clear process for the community on how to make requests and for a decision to be made.
- This could lead to a new diversity of events.

## 9.5 Link to the Vision and Objectives

The summary of issues and opportunities relates to the desired outcomes of the reserves management plan. From there an objective is developed for each group of outcomes, and a vision statement is developed that summarises all of the objectives. The vision, objectives and outcomes will guide the on-going management of the reserves, along with a set of actions.



## 10 Summary of Relevant References and Legislation

This section provides a summary of relevant references and legislation, in particular the key parts of those references. They are not limited to this summary and in all instances the full sections and context should be referred to.

### 10.1 National Statutory Context and Legislation



<b>Ngāti Tūrangitukua Claims Settlement Act 1999</b>	<u>Section 28(1)</u> : Direction for the reserves to be managed by Council as if they were classified as local purpose or recreation. The management by council is subject to terms set out in <u>schedule 2</u> of the deed of settlement (see below).
<b>Ngāti Tūrangitukua Deed of Settlement 1998</b>	<u>Schedule 2</u> : Council may delegate all powers of control and management to a committee, council to obtain consent of Ngāti Tūrangitukua Charitable Trust for particular activities listed in schedule 2.
<b>Reserves Act 1977</b>	In particular <u>section 38</u> . Management of a reserve of land that is not a reserve and <u>section 41</u> direction for management plans.  Specified purposes of reserves in sections <u>17 to 23</u>
<b>Department of Conservation Reserves Act Guide 2006, and Principles of Te Tiriti o Waitangi</b>	<u>Chapter 6</u> – The Treaty of Waitangi as it applies to Reserve Administration: In performing functions and duties under the Reserves Act, the administering body has a duty like the Crown's to administer the Reserves Act to give effect to the principles of the Treaty of Waitangi. The document sets out the principles that the Courts and Waitangi Tribunal have identified. The principles are best applied where they are relevant to a particular situation. For this reason, the <u>Treaty Principles as they relate to Department of Conservation</u> are applied in the reserves management plan.
<b>Resource Management Act 1991</b>	In the context of sustainable management, the part two matters ( <u>section 6</u> national importance, <u>section 7</u> other matters, and <u>section 8</u> Treaty of Waitangi) are to be considered. In the Taupō context these are mostly done by way of the District Plan (see below).
<b>Heritage New Zealand Pouhere Taonga Act 2014</b>	<u>Section 5</u> ; the act purpose includes; prohibiting the modification or destruction of archaeological sites without a permit from Heritage New Zealand Pouhere Taonga. It also provides the <u>New Zealand Heritage List / Rārangi Kōrero</u> outlining historic places, areas, wāhi tapu and the National Historic Landmarks / Ngā Manawhenua o Aotearoa me ōna Kōrero Tūturu
<b>Land Transport Management Act 2003</b>	<u>Section 3</u> , purpose is to provided planning and management for the state highway network. This act is of particular relevance to Waipapa Reserve where large portions of the reserve are within the State Highway 1 corridor.

**Fencing Act 1978**

This sets out council's obligations as they relate to fencing of property – particularly where council administered land adjoins private property. Section 3: application of the act notes that the Fencing Act does not apply to roads with the definition of roads including accessways. This is relevant to the connector reserves within Tūrangi where they adjoin private property.

**10.2 Iwi Management Plans and Assessments**





<b>Ngāti Tūrangitukua Website</b>	The Ngāti Tūrangitukua <a href="#">website</a> outlines the purpose of the Ngāti Tūrangitukua Charitable Trust as the post Treaty of Waitangi settlement entity that is responsible for managing the assets the Ngāti Tūrangitukua received under the Tūrangi Township settlement. It provides a reference to their goal, vision and commitment.
<b>Cultural Impact Assessment for the Tūrangi Reserves Management Plan Committee, prepared by Tihia Ltd, 2017</b>	Specific cultural assessment on the Tūrangi reserves for the draft reserves management plan developed in 2017. Identifies specific sites of cultural significance to Ngāti Tūrangitukua and recommended methods for specific management of particular reserves and activities.
<b>Ngāti Tūrangitukua Cultural Impact Assessment of the Tūrangi Wastewater Treatment Plant, prepared by Poipoia 2019</b>	While the report is not specifically prepared as part of the reserves management plan this document provides context to relevant Ngāti Tūrangitukua cultural history.
<b>Ngāti Tūrangitukua Introductory Te Mana o te Wai Statement – Te Rerenga o ngā Wai – prepared by Ngāti Tūrangitukua (2023?)</b>	While the report is not specifically prepared as part of the reserves management plan this document provides context to relevant Ngāti Tūrangitukua cultural values and principles.
<b>Ngāti Tūwharetoa Environmental Iwi Management Plan, prepared by</b>	Relevant to the reserves management the <a href="#">Management Plan for Taupō Waters</a> provides tools and direction to help achieve protection and sustainable management of their natural resources / taonga including (but not limited to) water, land, sacred places, flora and fauna.



**Management Plan for  
Taupō Waters, prepared  
by Taupō-nui-a-Tia  
Management Board, 2021**

**Ngāti Tūwharetoa  
Environmental Iwi  
Management Plan 2003,  
prepared by Ngāti  
Tūwharetoa Māori Trust  
Board 2002**

Relevant to the reserves management plan the Lake Taupō tributaries are a taonga of paramount importance to the people of Ngāti Tūwharetoa. The Iwi Management Plan sets out a process for the management board to consider and decide applications for (amongst other things) recreational use activities that may include the public's use of parts of Taupō waters.

**Te Kaupapa Kaitiaki Taupō  
Catchment Plan**

Te matawhānui; the vision of the plan is:

*A healthy Taupō catchment that is capable of sustaining the whole community and that is managed in a manner that reflects Ngā Tūwharetoa tikanga.*

The plan will be integrated into local government plans, strategies and activities.



### 10.3 Taupō District Council Documents



<b>Taupō District Plan</b>	The relevant parts of the <u>District Plan</u> include specific provisions for Significant Natural Areas, Outstanding and Amenity Landscapes, Foreshore Protection Area, and (as at 2025) the Residential Chapter. Of relevance in this chapter are the residential building setbacks from boundaries. A plan change is proposed to introduce an Open Spaces chapter that will improve building setbacks in reserves to open space and reserve needs.
<b>Long-term Plan</b>	Council's <u>Long-term Plan</u> is the guiding document for council's plans and priorities over 10 years. It covers the budgets required to deliver them. Where physical works are identified within the reserves management plan that are above typical operational works; they will be required to go through a Long-term plan funding process. .
<b>Mana Whakahono-ā-Rohe Agreement – Taupō District Council and Ngāti Tūrangitukua</b>	Partnership agreement of relevance Part D that outlines the commitments to administration and management of Tūrangi reserves, developing the reserves management, co-governance and co-management between Ngāti Tūrangitukua and Council, and subject to matters set out in the Ngāti Tūrangitukua Claims Settlement Act 1999, principles of the Treaty of Waitangi, section 4 of the Conservation Act 1987, the Reserves Act 1977 and the Local Government Act.
<b>Mana Whakahono Committee Partnership Plan 2024-2027</b>	Provides the committee's vision and plans for Tūrangi to help guide the development of Council's key policies, plans, strategies and bylaws for the Tūrangi area. Contains values of nurturing, support, uplifting culture, weaving the diverse community. Strategic pou of the environment, people, the community assets. Particular aspirations relevant to the reserves include bilingual signage, story boards, environmental enhancement, rubbish management, playground, entrance ways, and reserves upgrades, linkages.
<b>Recreation and Sport Strategy</b>	The <u>strategy</u> has a set of guiding principles for providing and improving reserves and parks including; providing a network, enhancement of the local environment, inclusive and accessible, working with iwi and hapū to enable cultural narrative and story sharing where deemed appropriate.
<b>Bylaws</b>	Relevant <u>bylaws</u> include Freedom Camping, Public Places, Reserves, Litter, Animal.



**Events and Venues**

Council [webpage](#) provides information on the community halls, licences and permits, and planning an event.





## 10.4 Waikato Regional Council Documents

### **Regional Pest management plan**

The plan provides management to minimise the impacts of pests in the region.



## 11 Glossary

This section covers words and terms used both within this document and the Reserve Management Plan. Definitions are partly from existing council documents for context in our organisation, and from Te Aka Māori dictionary.



<b>Ahi kā</b>	Burning fires of occupation, continuous occupation by a group, for a lengthy period of time.
<b>Ariki</b>	Paramount chief, first-born in a high-ranking family.
<b>Aroha</b>	Love, compassion, care
<b>Hapū</b>	Kinship group, subtribe – iwi descended from a common ancestor.
<b>Iwi</b>	Large kinship group of people descended from a common ancestor and connected through whakapapa to a distinct area.
<b>Kaitiaki</b>	A guardian or trustee
<b>Kaitiakitanga</b>	The act of guardianship
<b>Kanohi ki te kanohi</b>	Face to face
<b>Kaumātua</b>	Elder or group of elders, person with status within the whānau.
<b>Kawa</b>	Customs, procedures, protocol, particularly those related to formal activities such as welcoming and speeches.
<b>Mahi</b>	Work, vocation
<b>Mahi toi</b>	Art, craft
<b>Mana</b>	Authority or influence, prestige
<b>Mana Whakahono-ā-Rohe</b>	An iwi participation arrangement under subpart 2 of the Resource Management Act, and in this instance refers to the Mana Whakahono-ā-Rohe agreement between Ngāti Tūrangitukua and Taupō District Council 2022. Among many things this sets out specific agreements for the development of the reserves management plan.



<b>Mana whenua</b>	People of the land that hold authority over a particular area through whakapapa (their ancestral connection to the whenua). In the context of this document mana whenua is Ngāti Tūrangitukua hapū.
<b>Manaakitanga</b>	Hospitality, kindness, and care for others
<b>Matariki</b>	A large cluster of stars
<b>Maunga</b>	Mountain
<b>Mauri</b>	Life force, essence
<b>Mauri tū</b>	Environmental health and wellbeing.
<b>Moana</b>	Entity of water
<b>Onepū</b>	Sandy/sand
<b>Pā</b>	Fortified village, stockade
<b>Pā harakeke</b>	Flax plantation using sustainable harvesting and maintenance techniques to allow flax to continually grow and be harvested for traditional uses.
<b>Papa tākaro</b>	Playground, play area
<b>Pūrākau</b>	Stories, traditions, myths, and legends
<b>Rangatahi</b>	Youth, younger generation
<b>Rangatiratanga</b>	Chieftainship, right to exercise authority
<b>Raranga</b>	Weaving (of flax)
<b>Rohe</b>	Territory or boundaries of tribes




<b>Rongoā</b>	Plants with health or medicinal benefits and traditional use.
<b>Taiao</b>	Environment
<b>Tāngata whenua</b>	Indigenous people, born of the whenua
<b>Taonga</b>	A highly treasured object
<b>Tapu</b>	Sacred, spiritual restrictions
<b>Taupō-nui-a-Tia Management Board</b>	Represents iwi and community interests to manage the Taupō waters as if they are a reserve for recreation purposes.
<b>Te Matawhānui</b>	The vision
<b>Te Tiriti o Waitangi</b>	Te Reo Māori version of the Treaty of Waitangi
<b>Tikanga</b>	Customs, protocols, and behaviour guidance.
<b>Tohu</b>	Sites of significance to iwi and hapu, cultural landmarks
<b>Tū Hikitia</b>	Uplifting or elevating in the context of well-being, to improve or enhance
<b>Turangawaewae</b>	Place where one has the right to stand - place where one has rights of residence and belonging through kinship and <i>whakapapa</i> .
<b>Uri</b>	Descendant, relative, kin
<b>Waharoa</b>	Main entranceway, threshold gateway
<b>Wāhi tapu</b>	Sacred place, sacred site
<b>Wānanga</b>	To meet, consider and discuss



<b>Whānau</b>	Family
<b>Whakapapa</b>	Ancestral connections defining identity and place
<b>Whenua</b>	Land, placenta






NGĀTI TŪRANGITUKUA

NGĀTI TŪRANGITUKUA - TAUPŌ DISTRICT COUNCIL MANA WHAKAHONO

Dashboard Report –3 September 2025



TAUPŌ MOANA  
Te Kaunihera-ā-Rohe o Taupō

Rag status				
Red	0	Risk of agreed budget, timeframe or scope not being achieved. Intervention required		
Amber	0	Some deviations from the agreed budget, timeframe or scope. However, it's being managed and closely monitored		
Green	0	Agreed budget, timeframe, scope on track		
Clause	Action / Project		RAG status	Progress
Mana Whakahono a rohe agreement				
9.1	Inductions – staff		COMPLETE/ONGOING	Ongoing. 1 x Noho Marae to be held at Hirangi Marae annually. High level overview of iwi/hapū in the TDC district for all new staff. Deeper kōrero for staff with greater involvement with Tūrangi/Tūrangitukua. Council ensuring new staff get induction on the Mana Whakahono
9.3	Inductions - elected members		Green	Ongoing. Noho Marae held with elected members at Hirangi Marae at the beginning of each triennium. Planning for inductions of the new Council is imminent.
10.19[d]	Tūrangi Recreational Activity Centre - work in partnership to determine the location, design, opening		Green	Timeframes have been updated through the Council's 24/34 LTP process to enable better alignment with the Tūrangi master plan and structure planning process.
10.35	Protocol outlining engagement process for operational matters [where the Mana Whakahono but does not provide specifics of who and how that engagement is to be carried out].		Green	Work in progress. Ngāti Tūrangitukua and Council are working together to develop a comprehensive cultural values assessment for the Tūrangi township and its surrounds. Council considering proposal by Poipoia. Funding is an issue so trying to share with other departments

Clause	Action / Project	RAG status	Progress
10.35	Communications plan [committee matters]	Amber	Communications protocol being worked up to ensure alignment and clarity. In particular that all parties know which kaupapa should go to the Co-Governance Committee, the Joint Working Group, the Māori Committee, the Taiao Committee and the Charitable Trust.
13.4	Initial review of the Mana Whakahono will be completed no later than 18 months from the first meeting of the Committee.	Amber	Work in progress. Kaimahi are meeting again on 3 September to discuss possible draft clauses following TDC and Ngāti Tūrangitukua initial comments. Main areas for changes are: <ul style="list-style-type: none"> <li>• Clause to ensure the Mana Whakahono remains if the government changes the legislation;</li> <li>• Add a clause that describes what partnership means;</li> <li>• Add a procurement clause;</li> <li>• Ensure there is clear information about what kaupapa goes to the Co-governance Committee, Ngāti Tūrangitukua and the Mana Whakahono Joint Working Group.</li> </ul> This may be extended due to further feedback from the Māori committee and the Charitable Trust.
21	Plan Reviews and Plan changes – establish process for early engagement within six months of commencement.	Amber	Ngāti Tūrangitukua are happy with the existing process so no need, at the moment, to meet and discuss an alternative process.
24.1	Resource consents - establish process for early engagement & pre-application process within six months of commencement	Amber	Ngāti Tūrangitukua are happy with the existing process so no need, at the moment, to meet and discuss an alternative process.

Clause	Action / Project	RAG status	Progress
26.2	Monitoring - establish processes for involvement in monitoring and receipt of monitoring information collected under sec 35 of RMA within 12 months of commencement	Amber	Processes have not been established yet. Need to set up a hui to discuss.
31.3	Early engagement on three waters infrastructure projects.	Green	An early engagement process needs to be agreed with Ngāti Tūrangitukua. A meeting was held on 23 July to discuss this process but it focused on the water and wastewater consents renewal. In the meantime, engagement for the stormwater consent has commenced.
36.3	Tūrangi Reserve Management Plan to be developed within 18 months of commencing the planning process	Green	Kara will update the Committee at the workshop. A paper is going to the September Co-Governance Committee meeting for approval to consult on the draft Tūrangi Reserves Management Plan.
37.2	Operational Management Matters – Committee will work through a process to facilitate opportunities for Ngāti Tūrangitukua to be involved in the management of the Reserves.	Green	To be scheduled for discussion at the Joint Working Group and then presented to the Committee.
37.3, 37.4	Operational Management Matters – Annual Committee meeting with Council reserves team to be held prior to new financial year [2024/25]	Green	Parks Dept have received feedback on objectives and proposed resolutions and/or actions for operational parks matters from hapū. This will be reported to the Co-Governance Committee soon. Copies of existing licences and leases have been provided to Ngāti Tūrangitukua. Ngāti Tūrangitukua to provide a draft process to assess leases and licences.
38.1, 38.2 38.3	Reserve Admin Matters – Oversee and approve stocktake of outstanding reserve administration matters to be completed.	Green	Progress on the reserve administration matters was reported to the July Joint Working Group. This will be reported to the Co-Governance Committee soon.

Clause	Action / Project	RAG status	Progress
39.1 39.2	Review of Reserves – committee to work through a process to explore whether any reserves are no longer required as reserves.	Green	To be discussed with the Joint Working Group, after the development of the Tūrangi Reserve Management Plan.
44.2	Urupā Maintenance - develop an urupā maintenance plan within 12 months of the Commencement date.	Amber	<p>Waipapa 1A and Council agreed:</p> <ul style="list-style-type: none"> <li>• Council will: <ul style="list-style-type: none"> <li>▪ maintain mowing and weed eating and general maintenance until further notice. -Complete</li> <li>▪ remove rubbish along the fence line, entrance and at the western end of the fence line. -Complete</li> <li>▪ place 1-2 wheely rubbish bins along the urupā fence line. Hapū have consented council officers to service the bins. -Complete</li> </ul> </li> <li>• Ray Dempsey will clean up the western end and relocate the excess soil southwest of this area. The hapū to decide what to do with the excess soil. - Complete</li> <li>• Wet ground problem by the water tap. Water tap to be relocated away from Urupa entrance with drainage area. Contract let for this work.</li> </ul> <p>Waipapa 1A has held a meeting with hapū to discuss their aspirations for the urupā. This feedback will be provided to Council staff and then Ngāti Tūrangitukua and Council staff will work together to develop an urupā maintenance plan.</p>
45.3	Training & Capacity Building – explore opportunities for working from each other's workplaces and each providing a summer intern to one another for work experience	Green	Ongoing. This year's interns finished at the end of February. Lauren and Council staff met on 1 August to discuss and start planning for this year's interns.

Clause	Action / Project	RAG status	Progress
Schedule 2	Hearings commissioners	<b>COMPLETE</b>	Process has been agreed. Awaiting for three names from Ngāti Tūrāngitukua for the panel that will review the CVs for hearings commissioners and decide the final hearings commissioner list before it goes to the Co-Governance Committee for approval.
<b>Mana Whakahono Partnership Contract</b>			
Mana Whakahono Partnership Contract	Master (Spatial) Plan - Preparation of a master plan for Tūrangi by a project team including council officers and Tūrāngitukua representatives. The master plan is expected to be adopted by June 2026.	<b>Green</b>	Ngāti Tūrāngitukua representatives and Council staff met on 20 July to discuss feedback from Ngāti Tūrāngitukua on the draft scoping document. Council staff have redrafted the scope to incorporate Ngāti Tūrāngitukua comments and sent it to Ngāti Tūrāngitukua for further feedback.
<b>Other projects</b>			
	Hirangi Stream Maintenance	<b>Green</b>	Ngāti Tūrāngitukua sub-committee met with council staff on 23 July to discuss whether and how Council can assist with the restoration project. A site visit has been arranged with Grant Blackie from Waikato Regional Council for 20 August.
	Turangi Toilets	<b>Green</b>	Pete Bradshaw is assessing the options for location.
<b>Co-Governance Committee Partnership Plan implementation</b>			
	Co-Governance Committee Partnership Plan implementation	<b>Green</b>	Progress was discussed at the July Co-Governance Committee meeting. The project team are preparing a refreshed project plan and will present it back to the Committee for feedback.